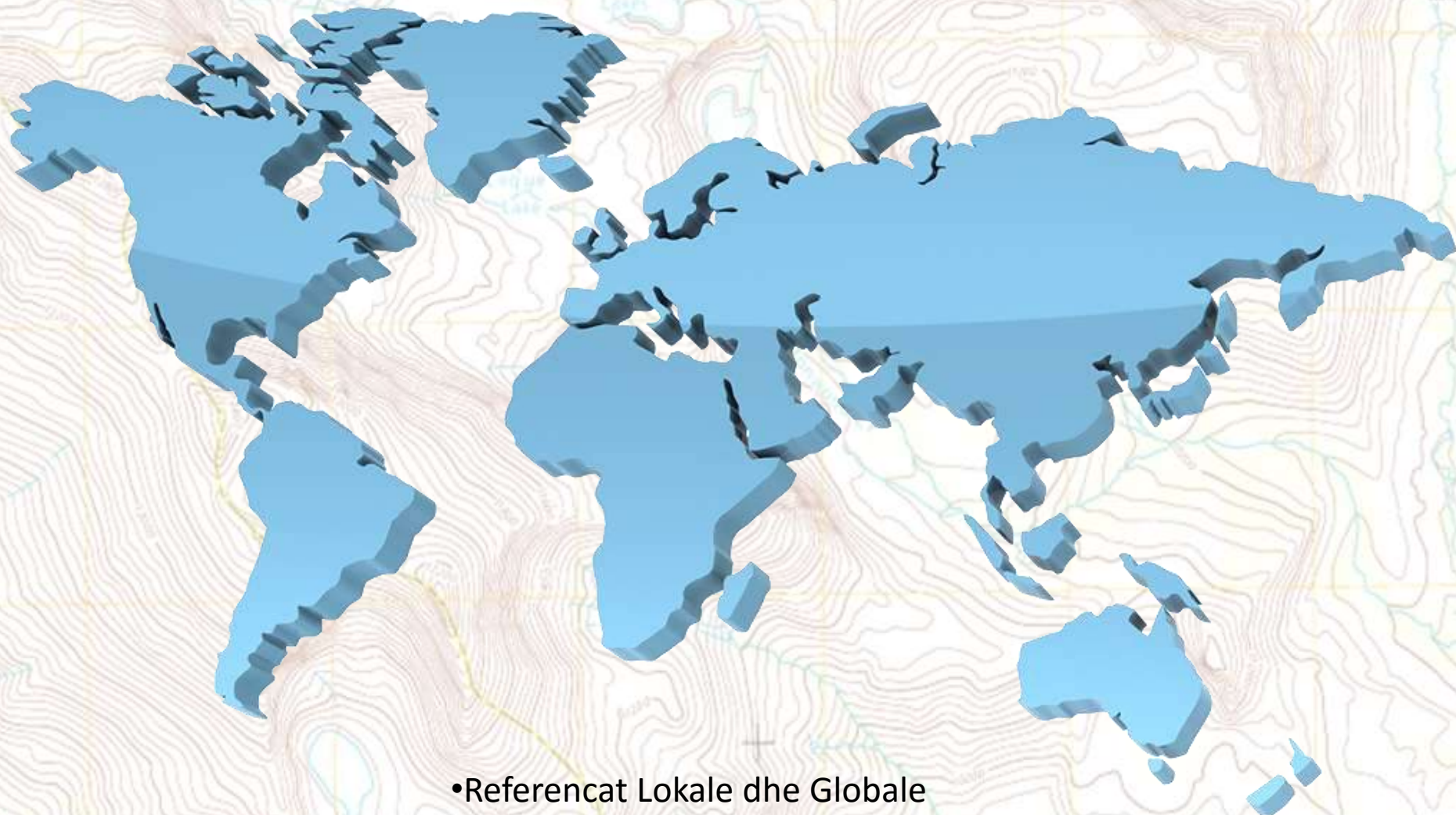


A topographic map with contour lines, a grid, and various geographical features. Labels like 'New Army Pass', 'Golden Trout Camp', and 'Sheldon Camp' are visible. The text is overlaid in the center.

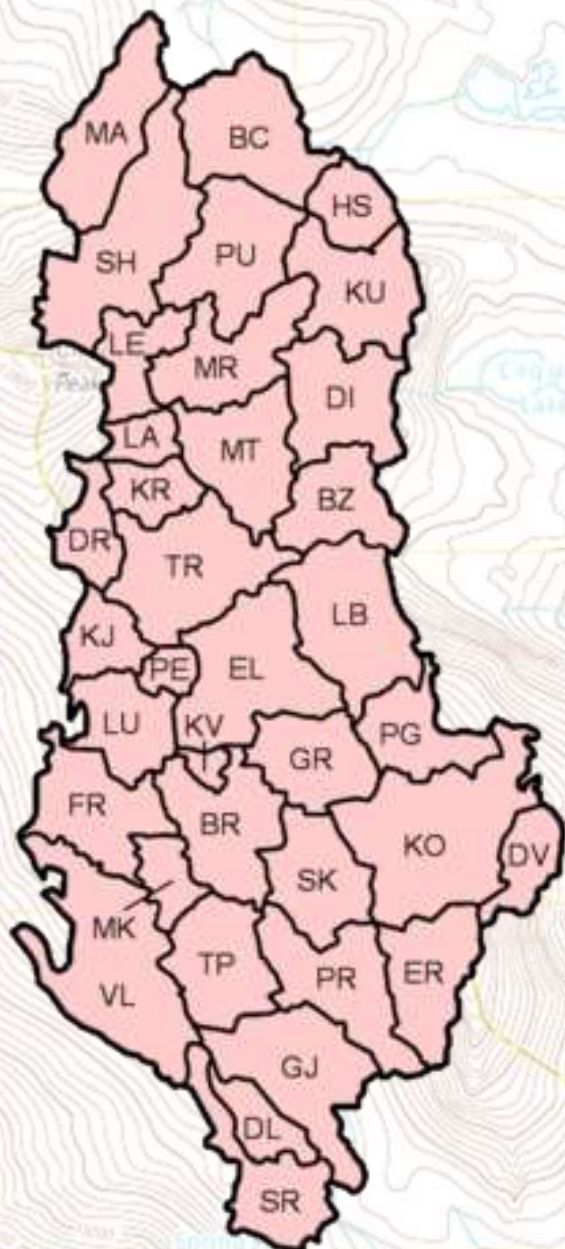
**PARIMET BAZE TE
SISTEMEVE
KOORDINATIVE DHE
HARTOGRAFISE**

Konceptet kryesore mbi sistemet koordinative



- Referencat Lokale dhe Globale

Pozita gjeografike



Shqiperia Sip. 28,748 Km2

koordinatat gjeografike

39 grade e 38' dhe 42 grade e 39' gjeresise veriore

19 grade e 16' te gjeresise lindore

Pozita gjeografike



Gjersi Gjeografike

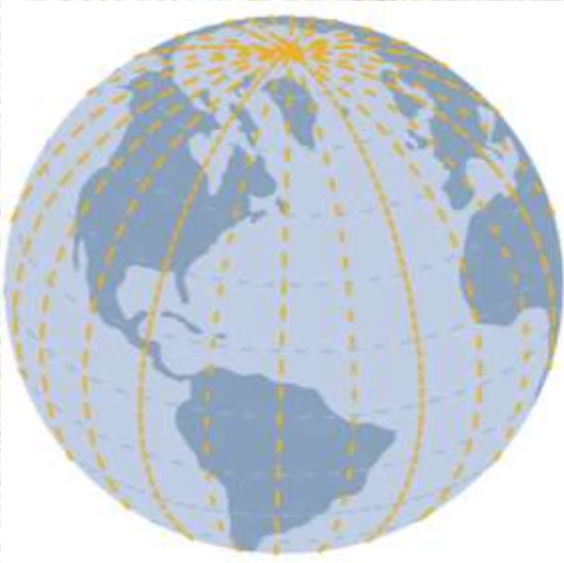


- Latitude / Paralele
Linjat e paraleleve masin pozicionin midis poleve.
Ku “Ekuatori” si linje ka vleren 0° grade
Polet kane vleren 90° grade - **90° Veri** dhe **90° Jug**

Nje grade (1° **latitude**) = **111 Kilometra**
Ose (*60 milje detare / 69 milje tokesore*)

Nje minute ($1'$ **latitude**) = **1.85 Kilometra**
Ose (*1 milje detare / 1.15 milje tokesore*)

Gjatesi Gjeografike



- Longitude / Meridiane
Linjat e meridianeve te cilat masin gjatesine nga poli ne pole ku meridiani 0 eshte ai I “Grenuicit” nga ku leximi behet me grade, lindje – perndim (Est – West)

Pozita gjeografike

Degres, Minutes and Seconds

DDD° MM' SS.S"

Grade, Minuta dhe Seconda

GGG° MM' SS.S"

degrees minutes seconds:

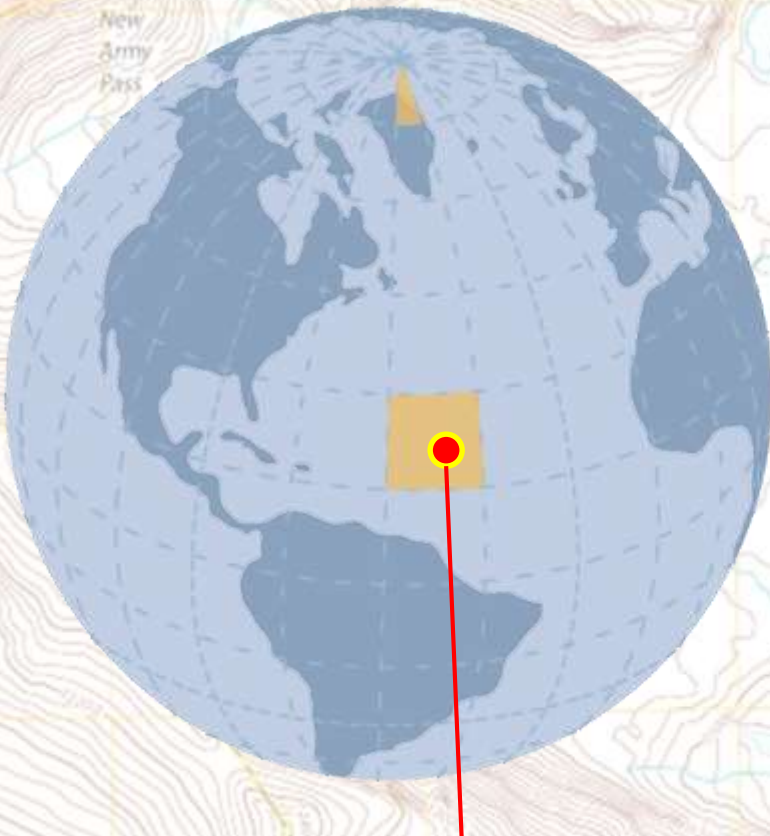
40° 26' 46" N - 79° 58' 56" W

degrees decimal minutes:

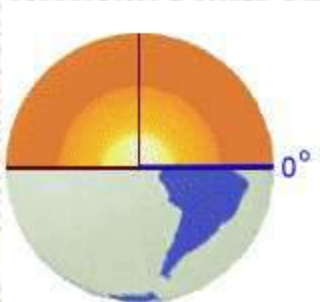
40° 26.767' N - 79° 58.933' W

decimal degrees:

40.446° N - 79.982° W



32° 18' 23.1" N
122° 36' 52.5" W



*There are sixty seconds in a minute (60" = 1') and
There are sixty minutes in a degree (60' = 1°).*

*15 seconds is one quarter of a minute or 0.25 minutes
30 seconds is one half of a minute or 0.5 minutes
45 seconds is three quarters of a minute or 0.75 minutes*

Koordinatat Gjeografike

ϕ : 41° 19' 43" N

λ : 19° 49' 5" E

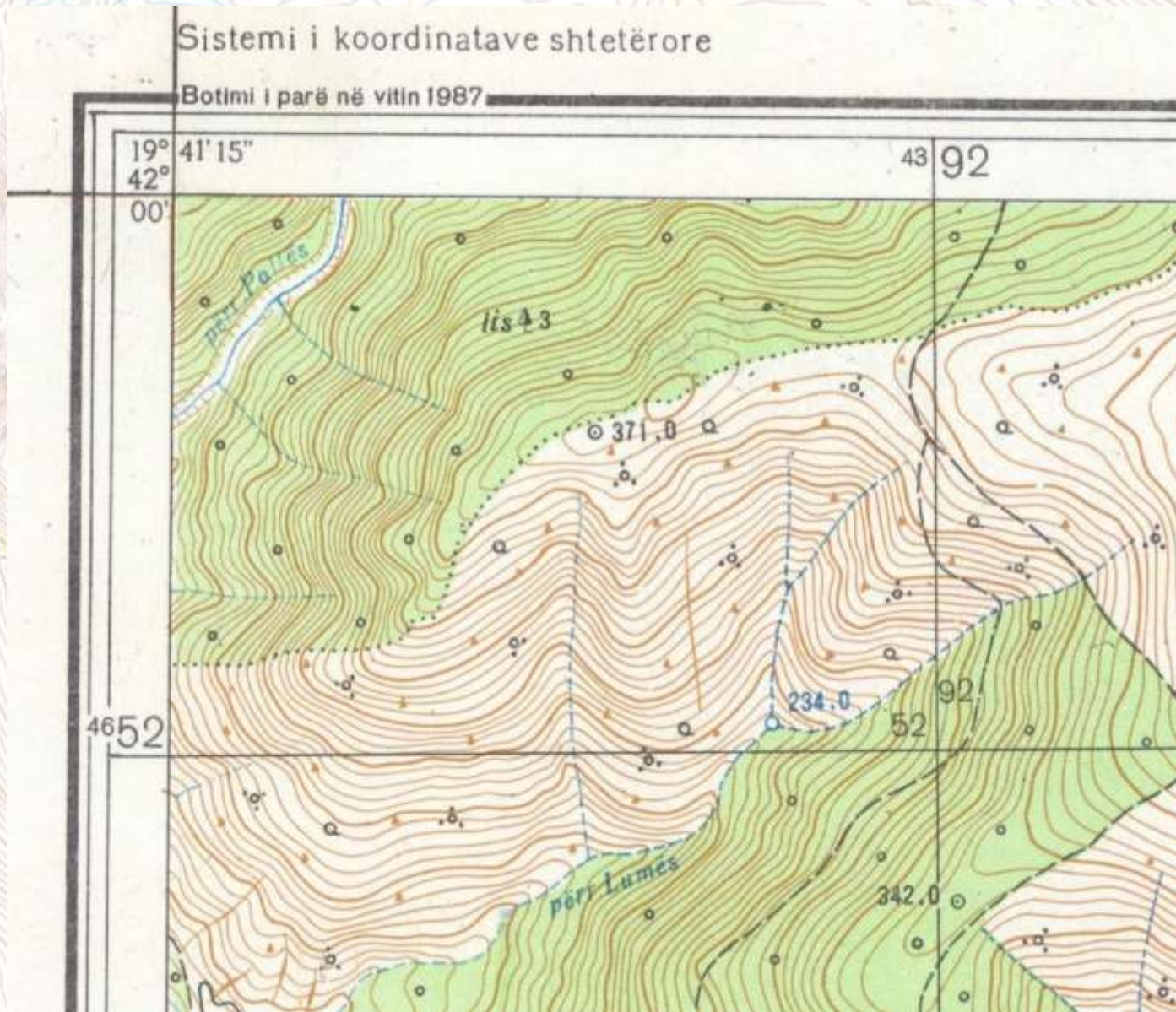
x: 401072.224m

y: 4577824.924m



● Ne qender te Tiranes (ish shatervani)

Harte Topografike e shkalles 1:10000 (Instituti Topografik i Ushtrise)



Pozita gjeografike e Permetit

<http://www.albinfo.al>

grade minuta sekonda:

Latitude : 40° 13'59.4"N

Longitude : 20 ° 21'12.1"E

Kordinata te transformuara ne WGS 84

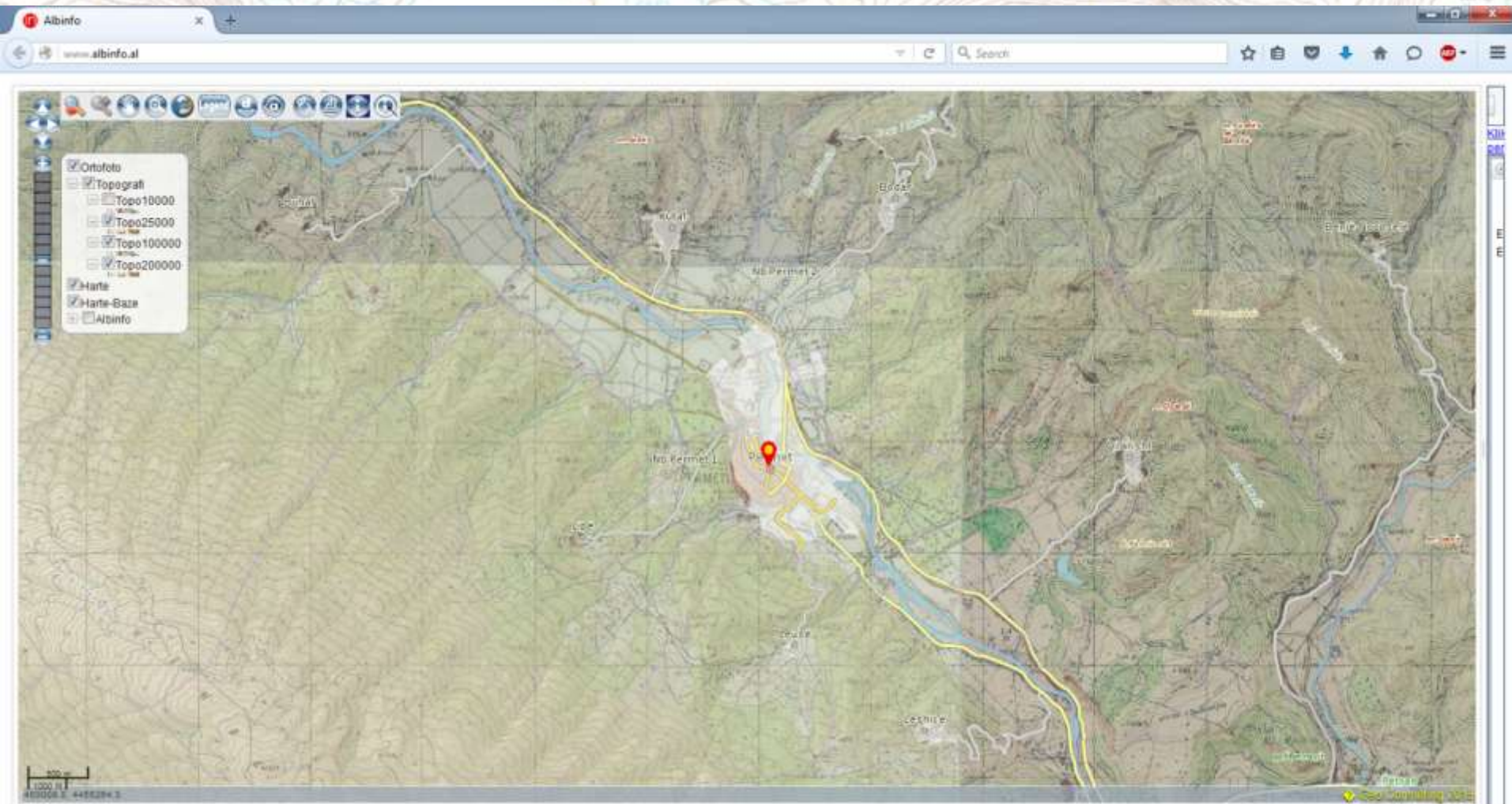
Latitude : 40.233169170312

Longitude : 20.3533514607637



Pozita gjeografike e Permetit

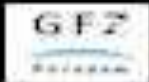
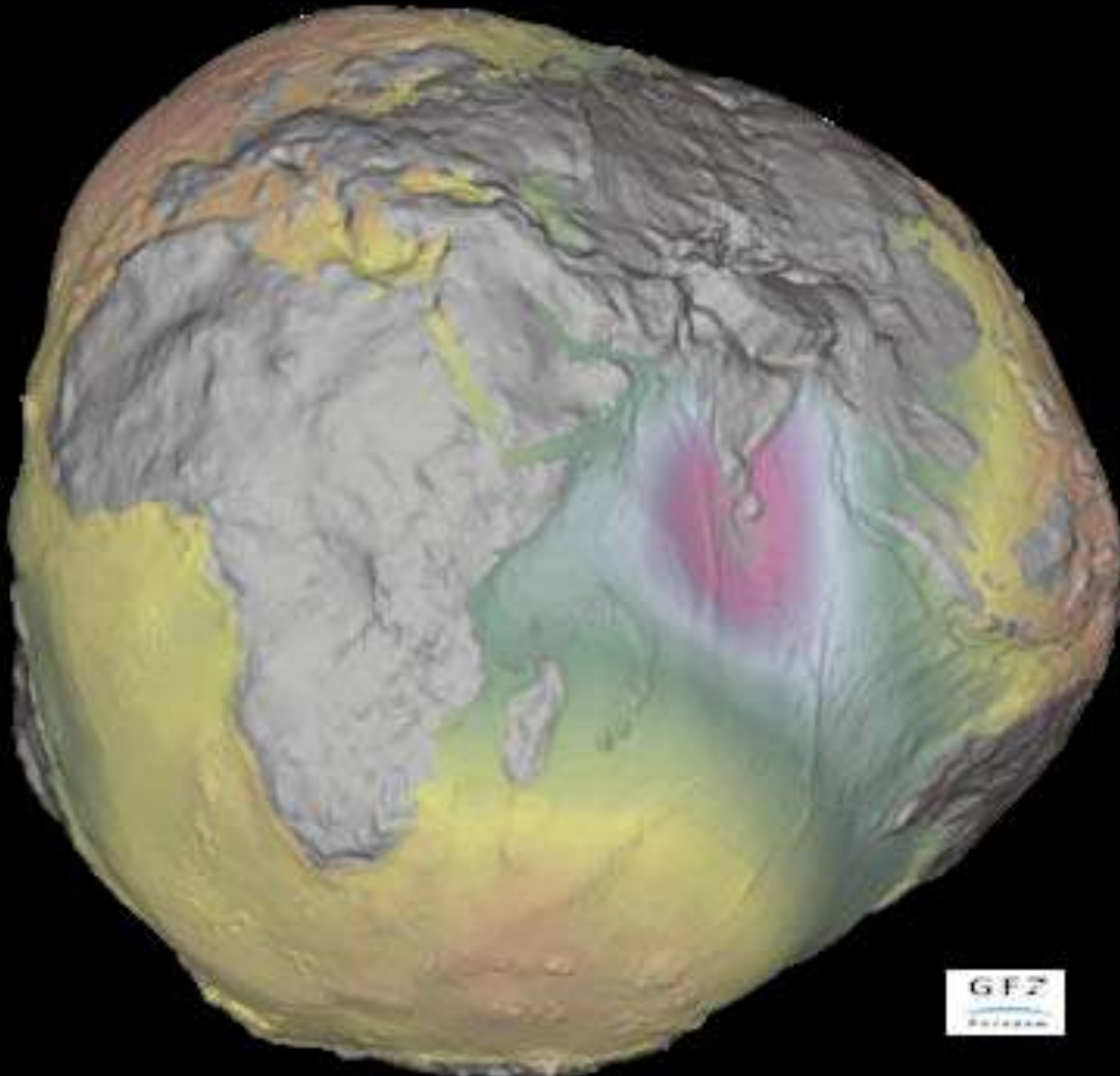
<http://www.albinfo.al>





- REFERENCAT HAPESINORE (DATUM)
- REFERENCAT LOKALE DHE GLOBALE
- NGA TOKA (REALITETI) TEK HARTA
- TRANSFORMIMET E KOORDINATAVE
- PROJEKSIONET E HARTAVE

jeoidi

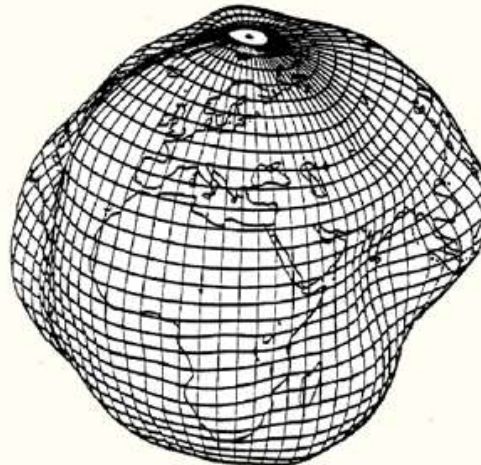


Gjeoidi – Referenca vertikale

Toka



Gjeoidi



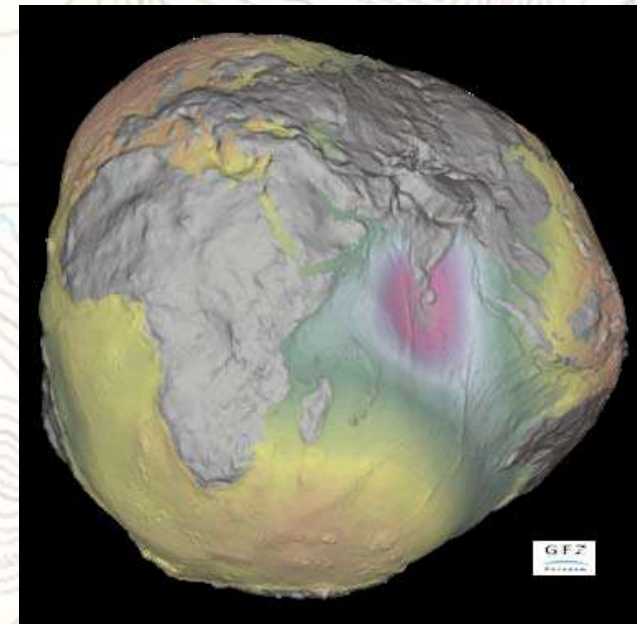
Pika me Nivel Zero



Tek shkëmbi i Kavajes

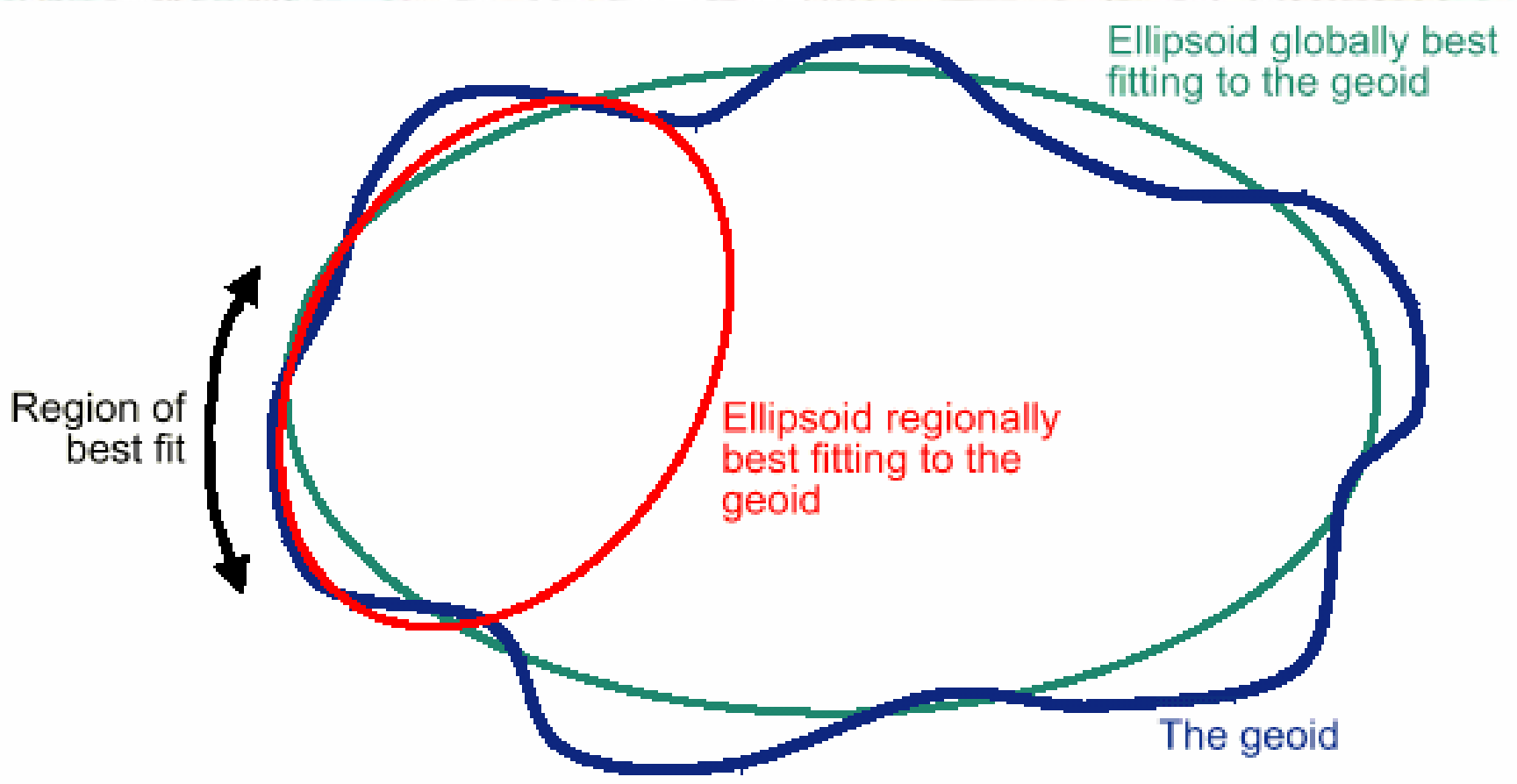
Forma e Gjeoidit influencohet nga forca e Gravitetit

Gjeoidi paraqet nivelin e detit (oqeanëve)



GFZ

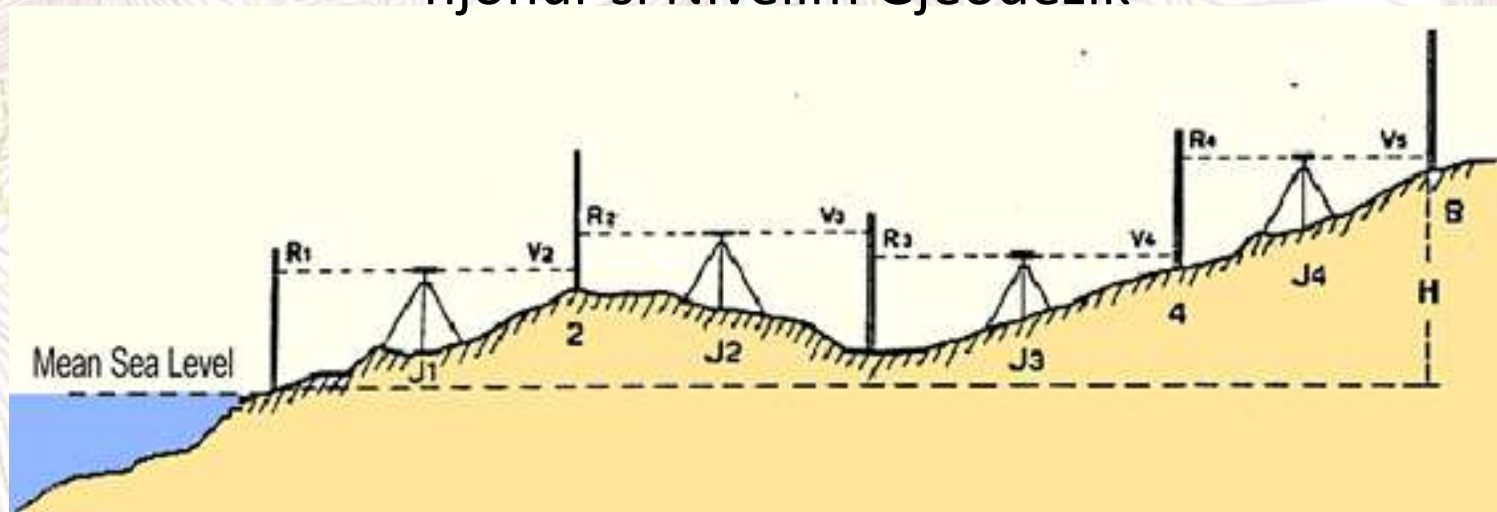
New
Army
Pass



Elipsoidi zgjidhet ne menyre te tille qe ti afrohet sa me shume siperfaqes se zones se interesit (ose nje shteti te caktuar)

Lartesia nga niveli i detit

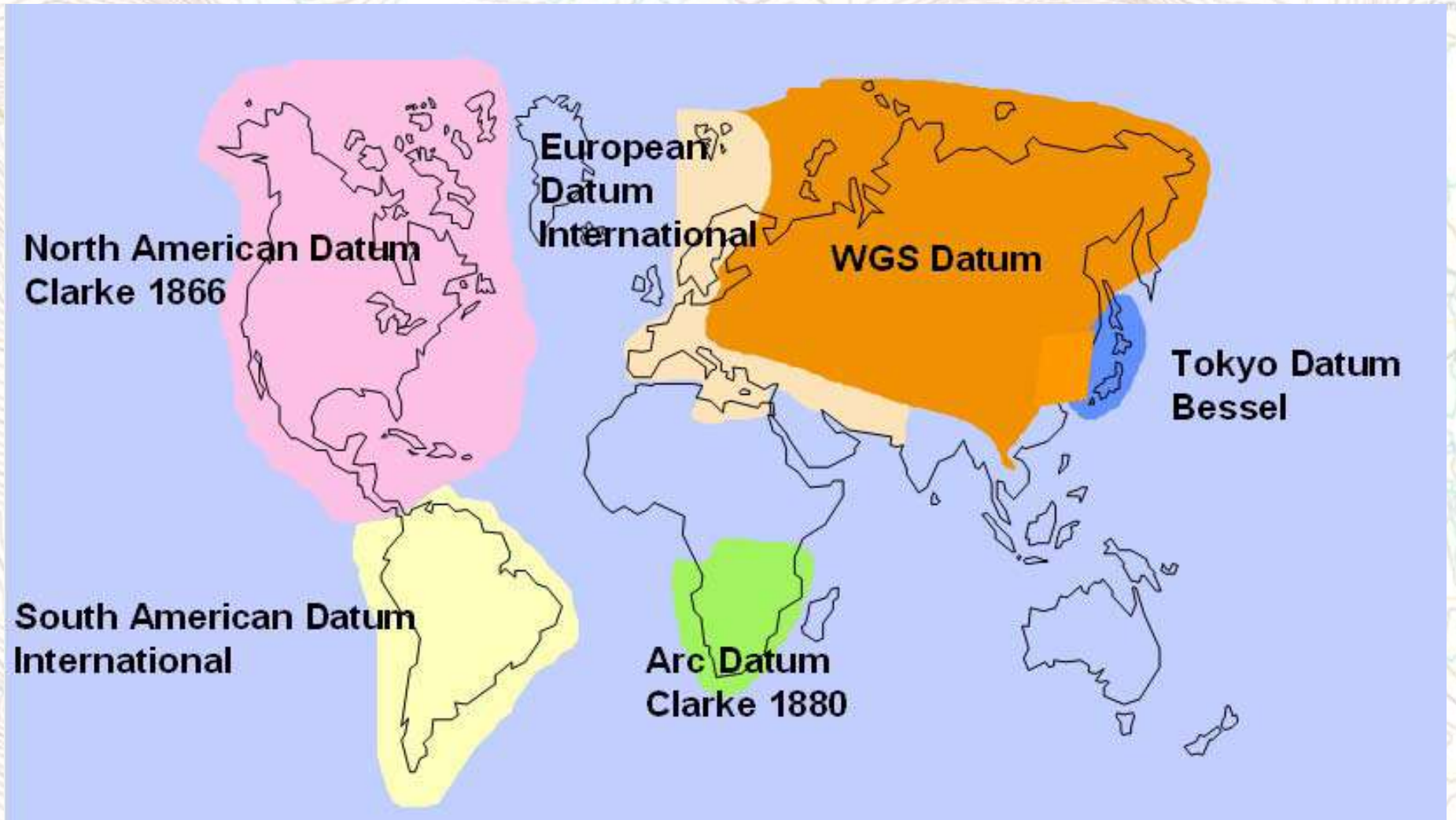
Duke u nisur nga pika e nivelit te detit (Mean Sea Level), lartesia e cdo pike mbi siperfaqen e tokes mund te matet duke perdorur tekniken e njohur si Nivelim Gjeodezik



Vende te ndryshme kane pika reference te ndryshme (referenca lokale)

P.sh pika e nivelit te detit ne Belgjike eshte 2.34m me e larte se pika e nivelit te detit ne Hollande

Perdorimi i Elipsoideve ne vende te ndryshme



Disa elipsoide me te perdorur

<i>Name</i>	<i>Date</i>	<i>a (m)</i>	<i>b (m)</i>	<i>Use</i>
Everest	1830	6377276	6356079	India, Burma, Sri Lanka
Bessel	1841	6377397	6356079	Central Europe, Chile, Indonesia
Airy	1849	6377563	6356257	Great brittain
Clarke	1866	6378206	6356584	North America, Philippines
Clarke	1880	6378249	6356515	France, Africa (parts)
Helmert	1907	6378200	6256818	Africa (parts)
International (or Hayford)	1924	6378388	6356912	World
Krasovsky	1940	6378245	6356863	Russia, Eastern Europe
GRS80	1980	6378137	6356752	North America
WGS84	1984	6378137	6356752	World (GPS measurements)

Sistemi Koordinativ Shqiptar

Elipsoidi – Pulkovo 1942

$a = 6378245.0\text{m};$

$b = 6356863.0187730473\text{m}$

Projeksioni – Gauss_Kruger

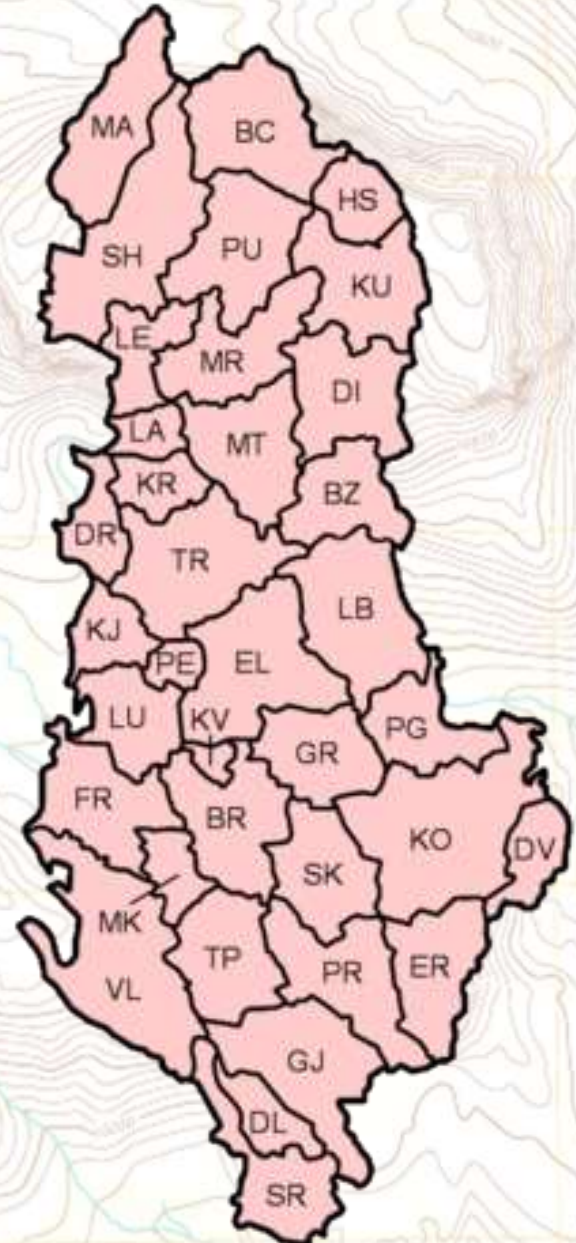
Cilindrik, Simetrik

(Conformal), Transverse

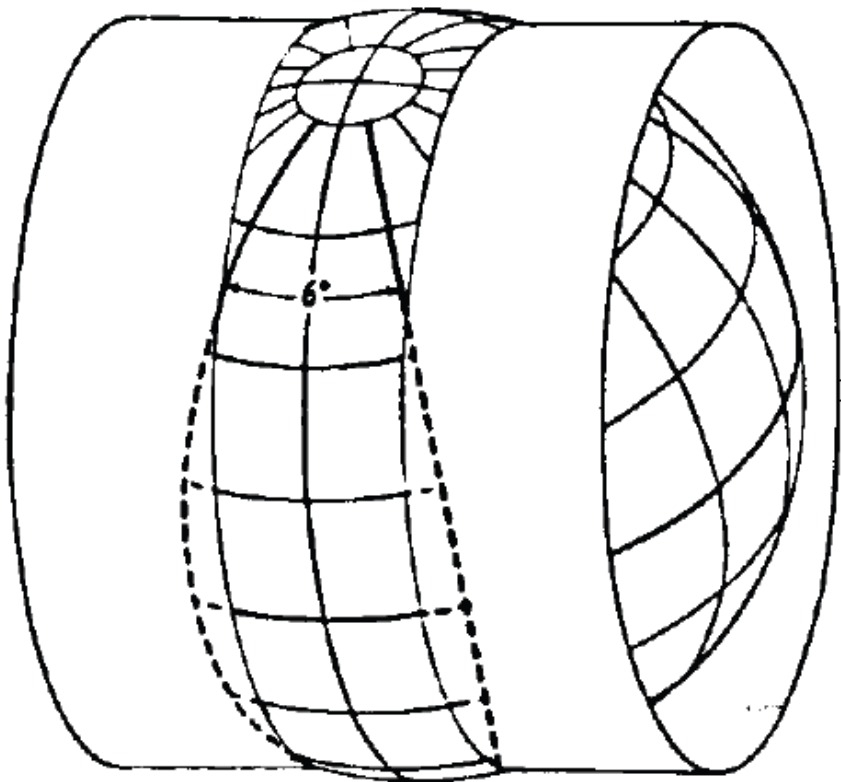
Mercator

Meridiani Qendror – 21

Gjeoidi – Lokal (Pika me lartesi zero ne Durres)



Nje sistem i perdorur gjeresisht: Universal Transverse Mercator (UTM)

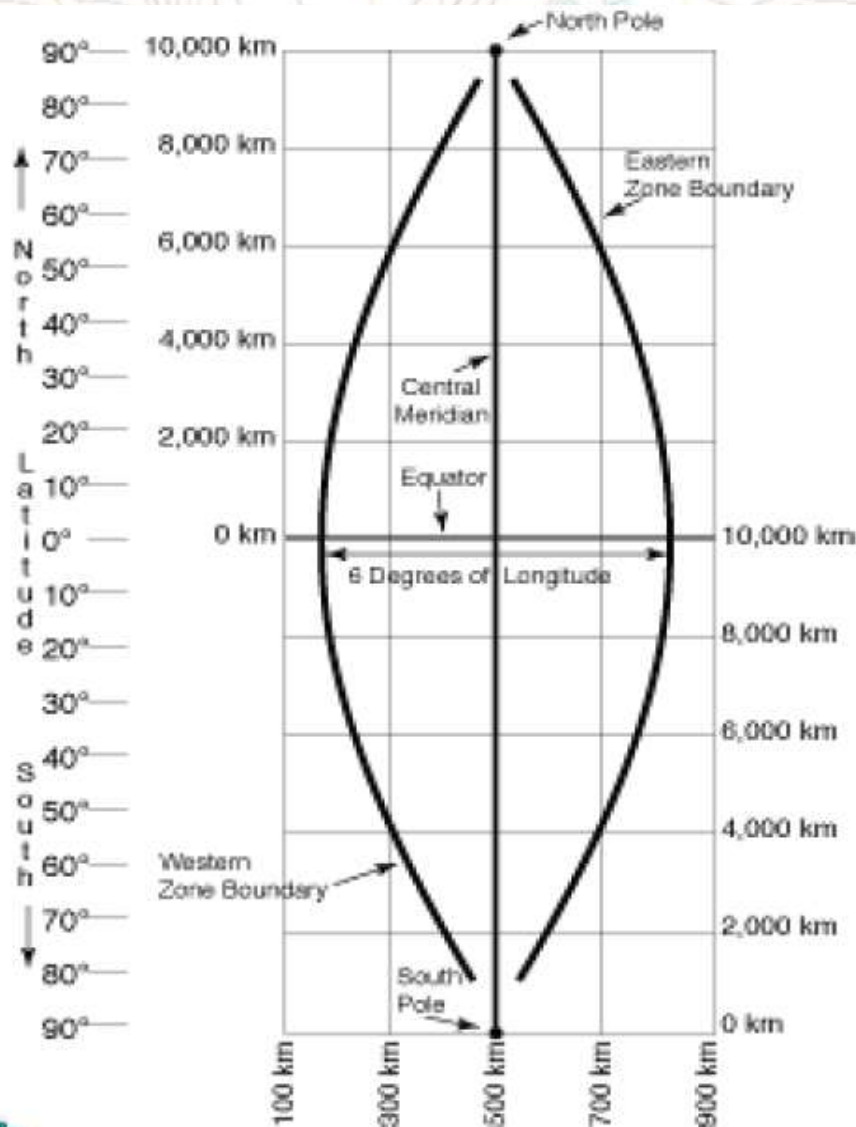


(UTM) Universal Transverse Mercator



Transverse Secant Cylinder
(6° zones)

Nje zone ne UTM



Projeksion Terthor - Cilindrik: cilindri është tangent përgjate meridianeve

60 zona me 6°

Zona 1 fillon në gjatësinë gjeografike 180°

Zonat polare nuk përfshihen

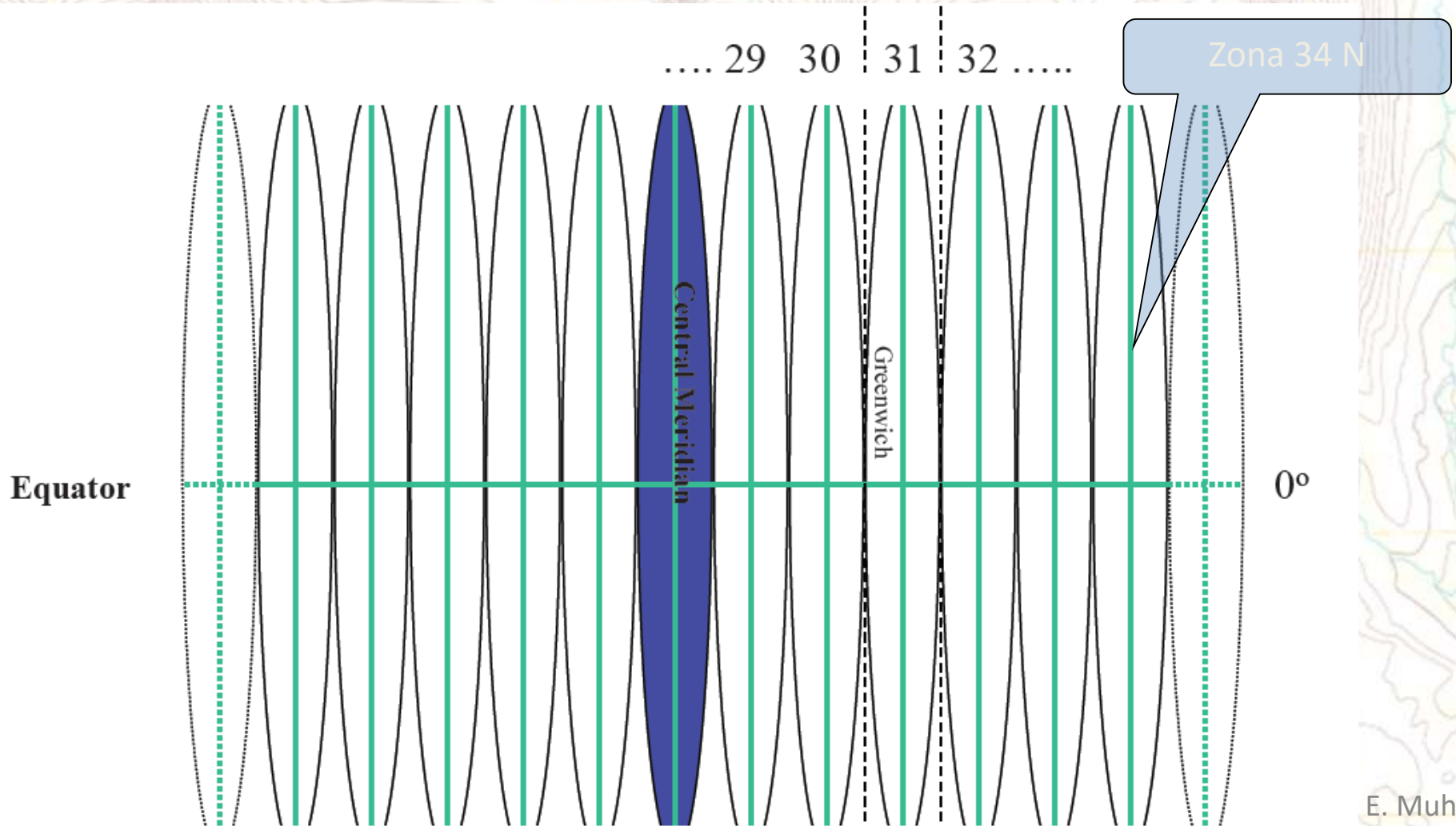
Koordinatat X – me 6 shifra (zakonisht)

Koordinatat Y – me 7 shifra (zakonisht)

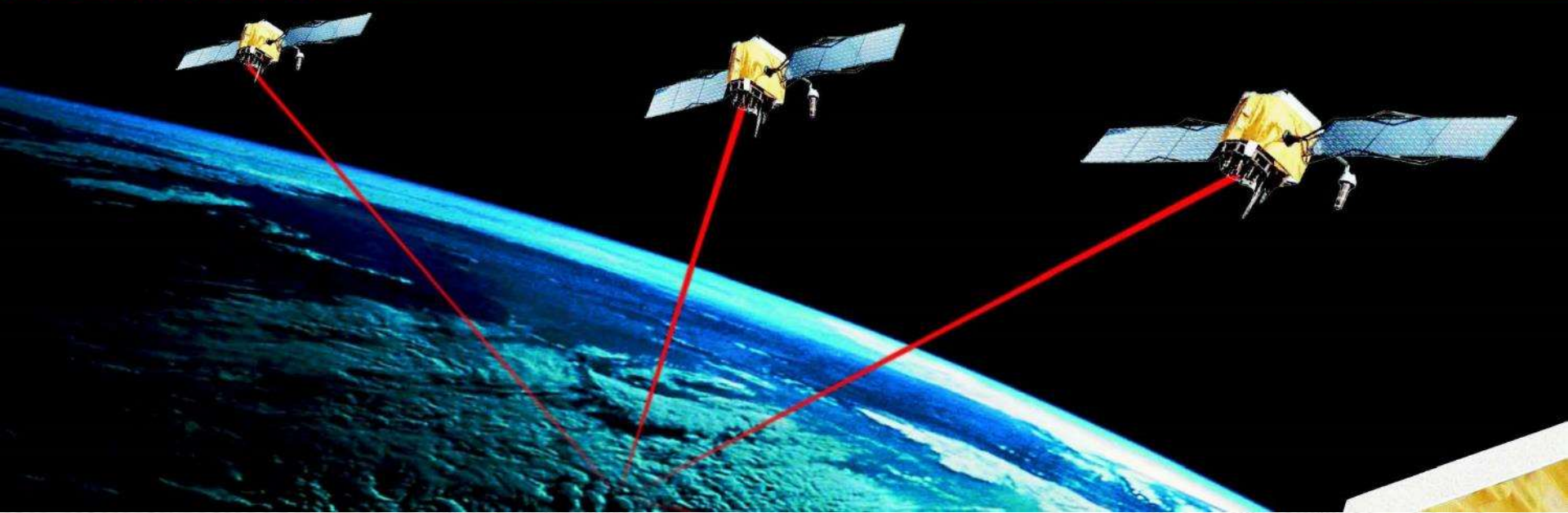
Sistemi global ne UTM per Shqiperine

WGS-84 (*world global sistem / sistemi I pozicionimit global*)

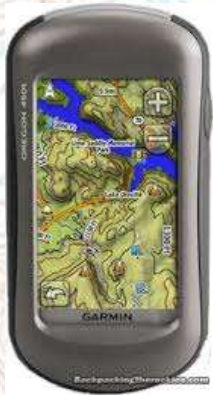
WGS84 – 34N



Sistemi global UTM – **GPS** (**G**lobal **P**ositioning **S**istem)

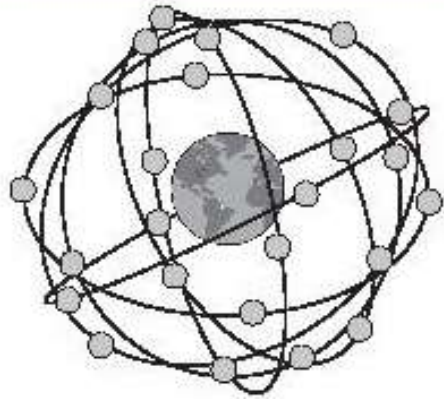


GPS



2.1 The Space Segment

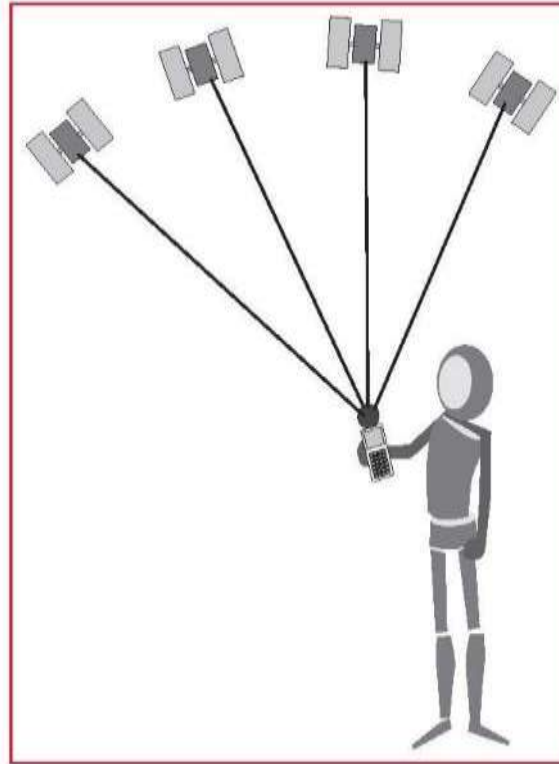
The Space Segment is designed to consist of 24 satellites orbiting the earth at approximately 20200km every 12 hours. At time of writing there are 26 operational satellites orbiting the earth.



GPS Satellite Constellation

Numri I Sateliteve

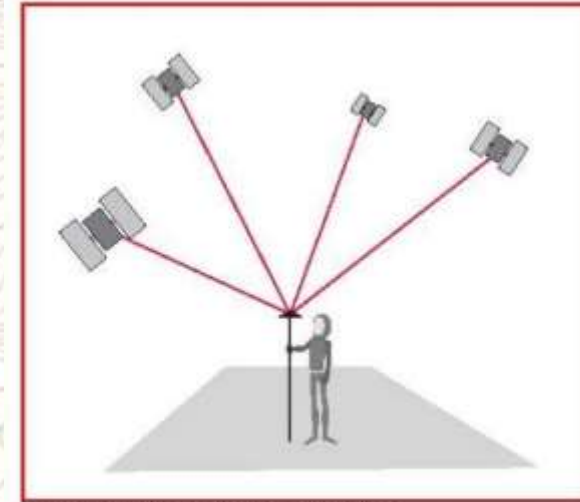
?



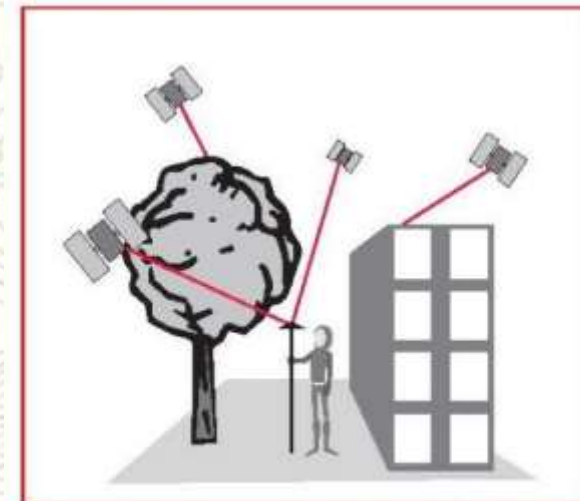
Numri I Sateliteve

3/4

Mbulimi



Clear view to four satellites



Large objects can block the GPS signal

A topographic map showing contour lines, water bodies, and geographical features. The map is the background of the slide. The text "Harta dhe elementet" is overlaid in the center in a large, white, bold font with a red outline. The map includes labels for "New Army Pass", "Golden Trout Camp", "Craw Peak", "South Fork Lake", "Cottonwood Cr.", and "Chicken Spring Lake".

Harta dhe elementet

Hartat

Ushtarake

Topografike

Politike

Urbane

Klimaterike

Hidrogjeologjike

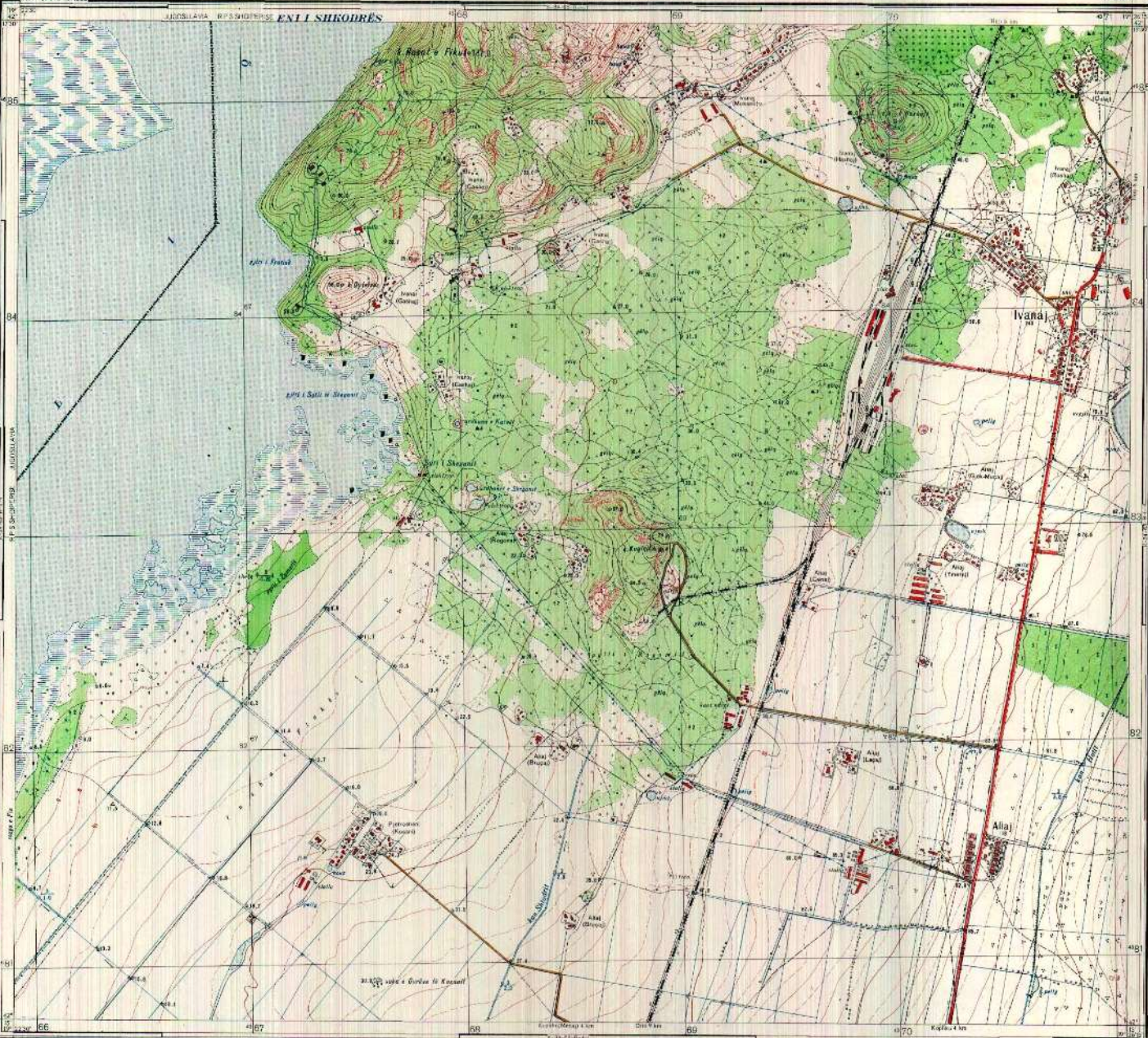
Detare

etj...



Skeme





 Drejtimi

1:10000

Approximate Scale 1:100,000 • 1 inch = 1.58 miles • 1 centimeter = 1 kilometer



Approximate Scale 1:62,500 • 1 inch = 1 mile • 1 centimeter = 0.63 kilometers



Approximate Scale 1:31,250 • 1 inch = 1.18 miles • 1 centimeter = 0.31 kilometers



	ranger station	Interstate	
	lodging	US Hwy	
	hiking trail	dry lake	
	campground	swamp	
	water skiing	canal	
	prairie dog town	gate	
	lighthouse	gaging station	
	telephone	gravel or borrow pit	
	trailhead	tunnel	
		spring	

Example of symbols and what they represent

Detalje të rrethit 1:50,000 (K-34-63-B-b-3) dhe të rrethit të koordinatave shtetërore (K-34-63-B-b-3) të publikuar në vitin 1985. Shprehja e koordinatave shtetërore është në metra dhe gradat dhe minutat e këndit janë në sekonda dhe centimetra. Shprehja e masës së gjatë është në metra dhe centimetra.



1:10000
1:100000
1:500000



Shprehja e masës së gjatë është në metra dhe centimetra. Shprehja e masës së gjatë është në metra dhe centimetra.

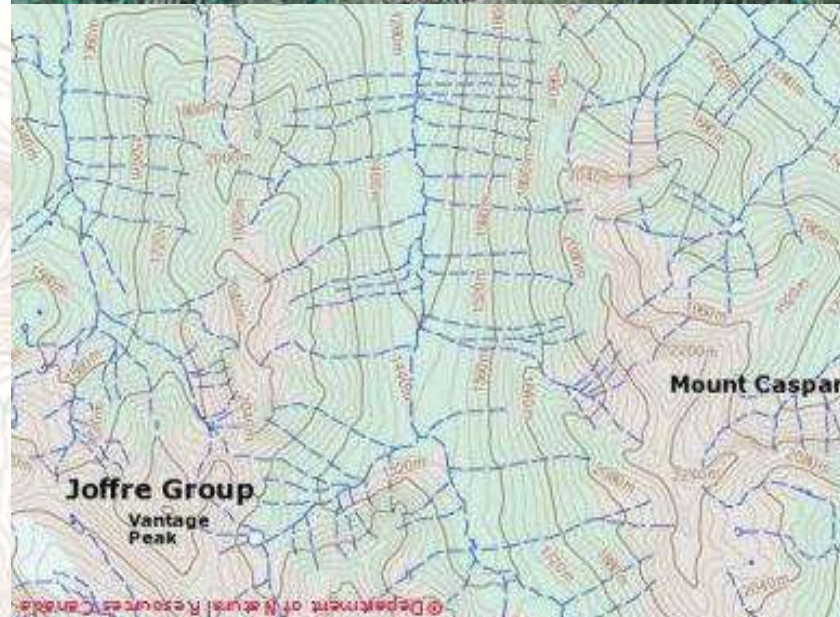
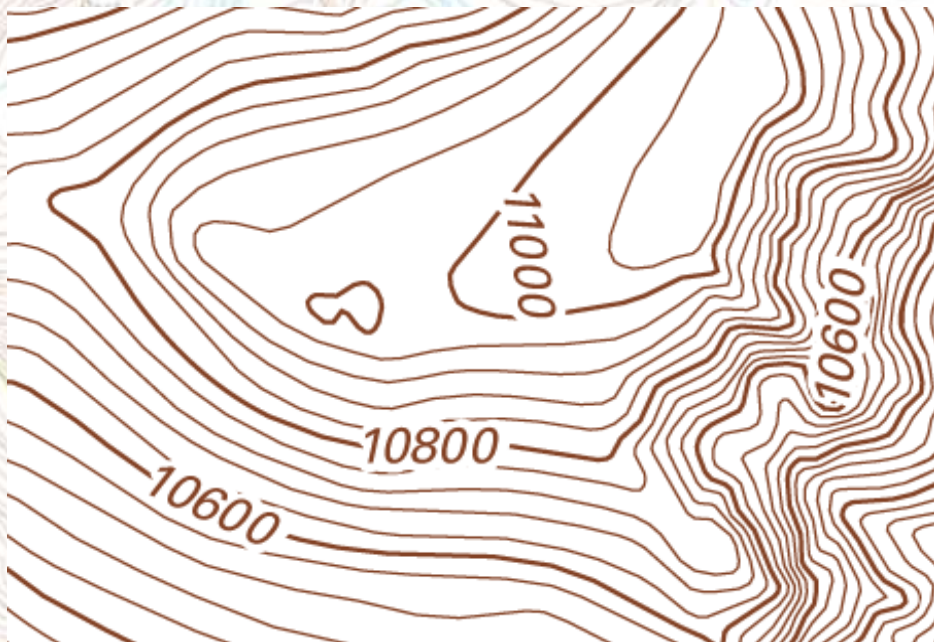
A topographic map showing contour lines, water bodies, and geographical features. The map is the background of the slide. Labels on the map include 'New Army Pass' in the top left, 'Golden Trout Camp' in the top right, 'Crag Peak' on the left side, and 'Chicken Spring Lake' at the bottom left. The text 'Relievi' is overlaid on the map in a large, bold, black font with a yellow glow.

Relievi

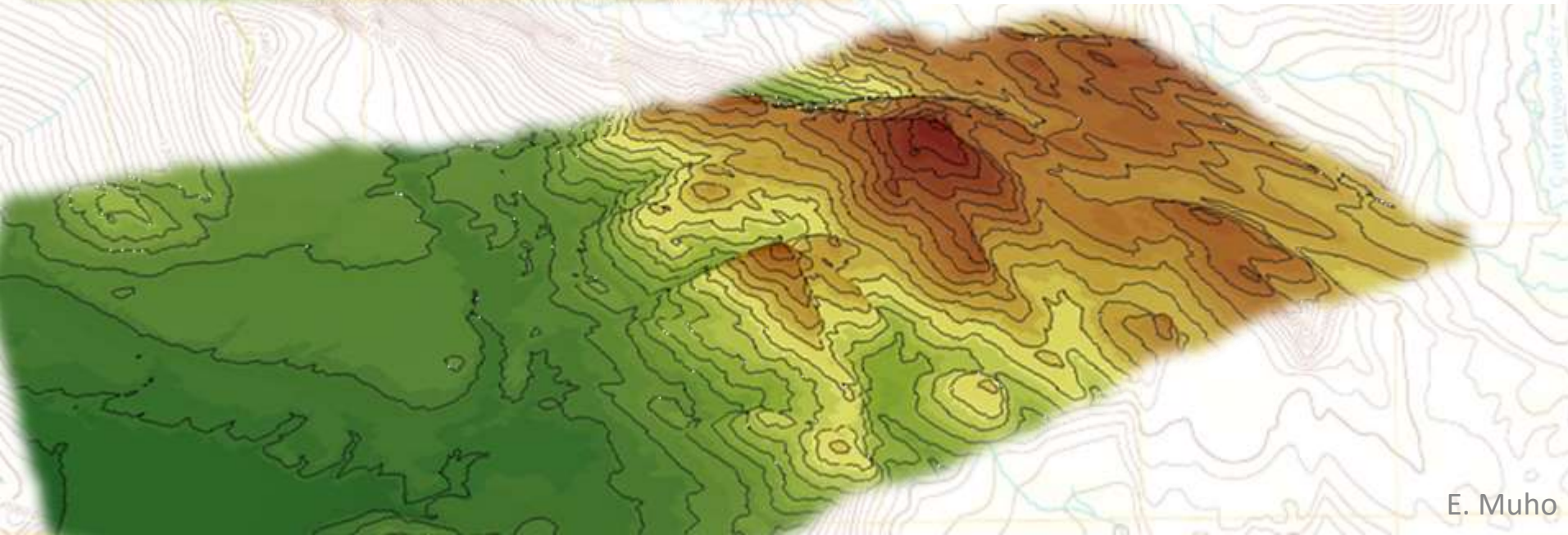
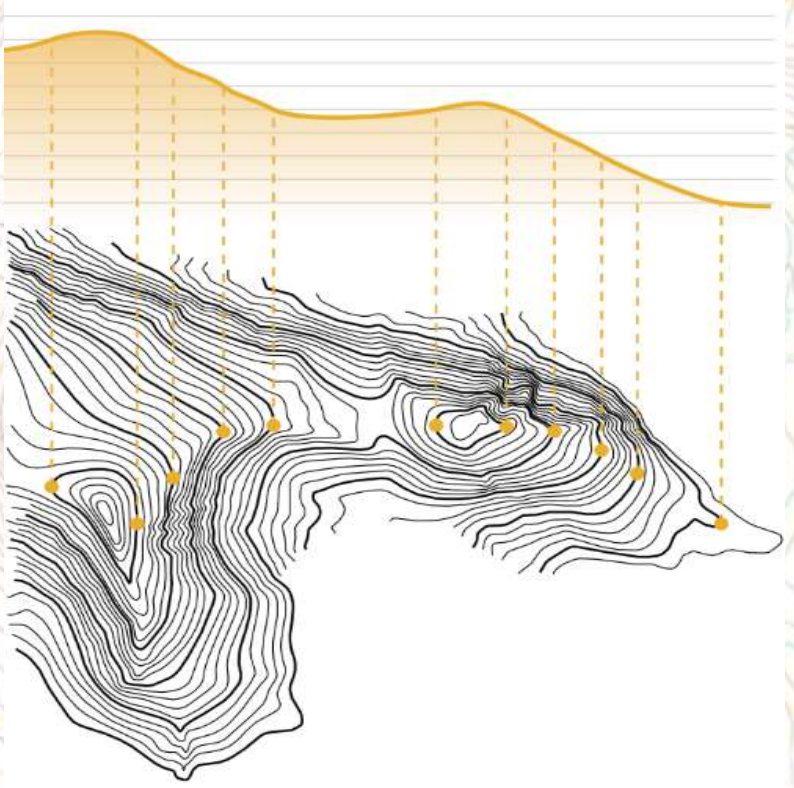
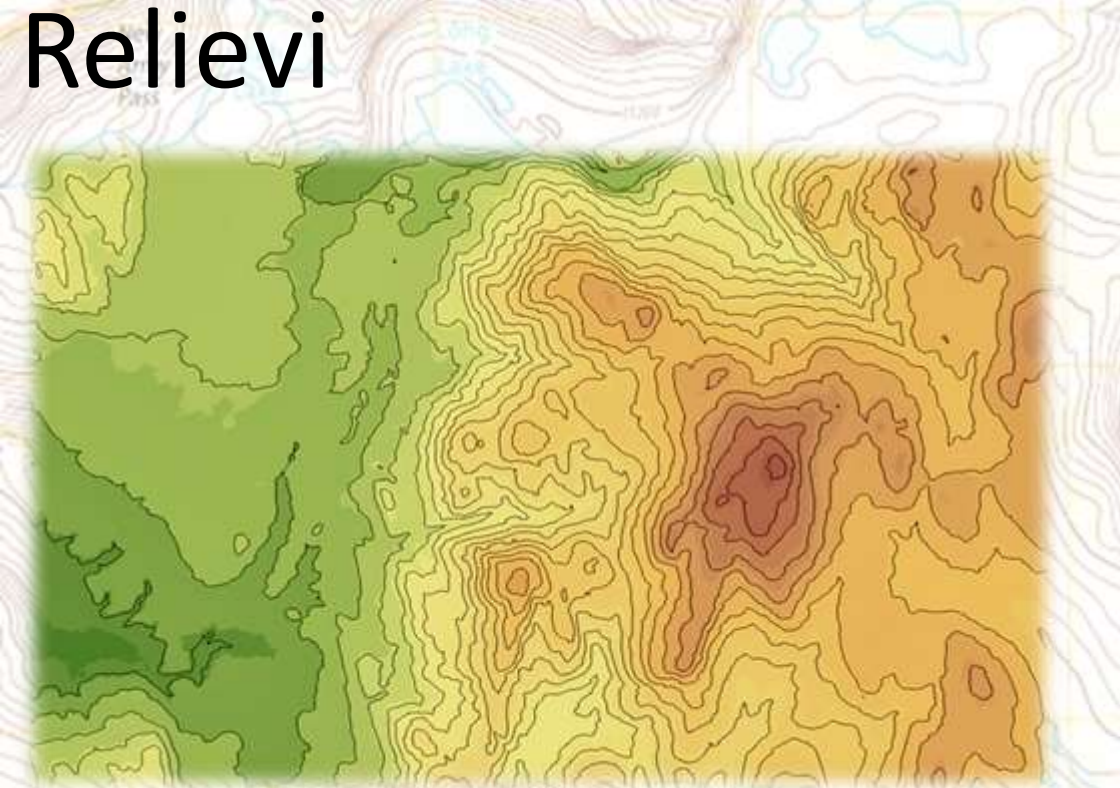
&

Leximi

Izoipset

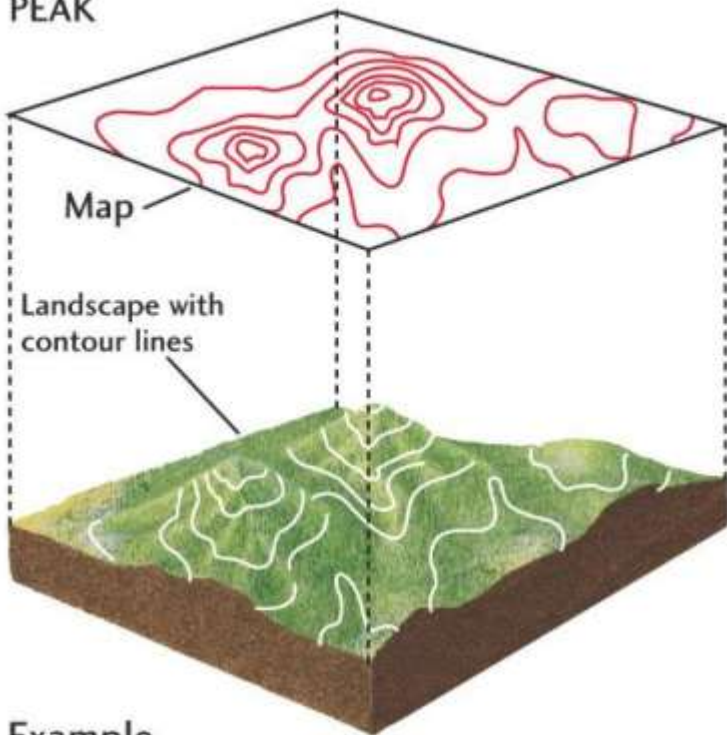


Relievi

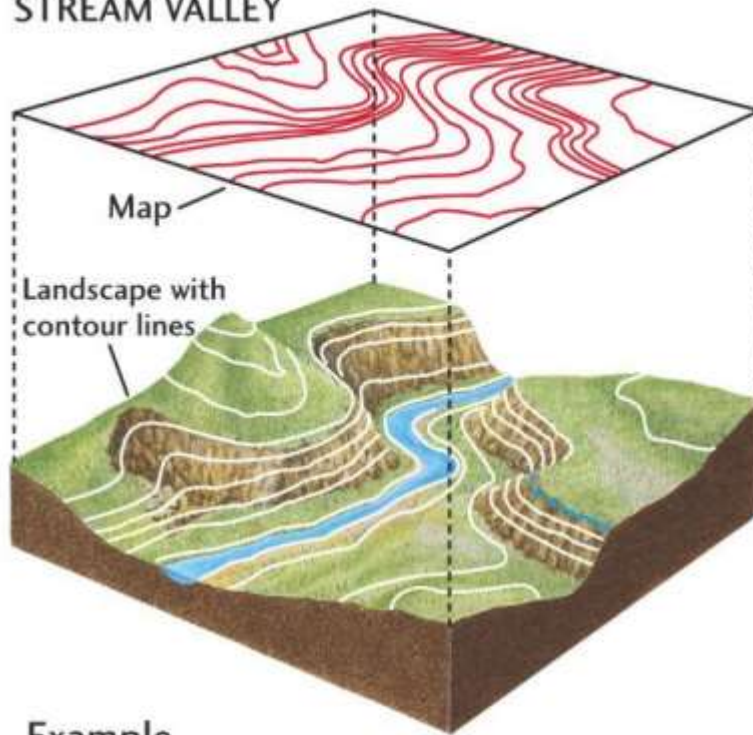


Relievi

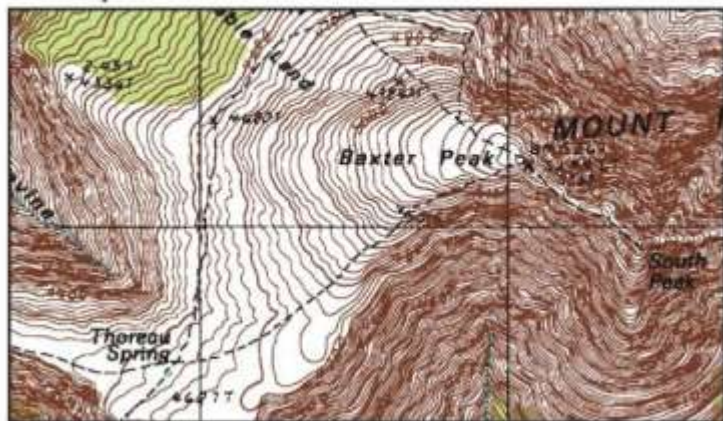
PEAK



STREAM VALLEY

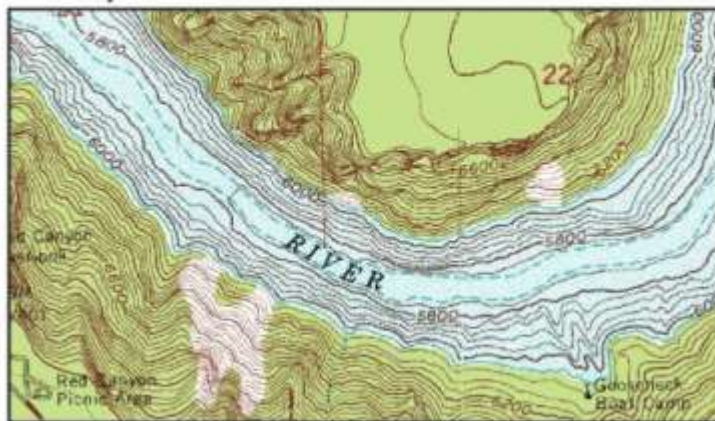


Example



Mt. Katahdin, Maine

Example



Flaming Gorge, Wyoming



Fig. 35(1)



Fig. 36(1)



Fig. 37(1)



Fig. 35(2)

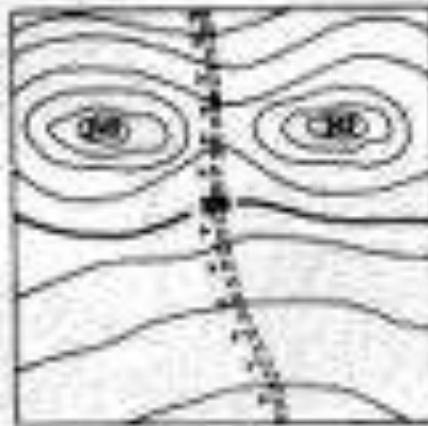


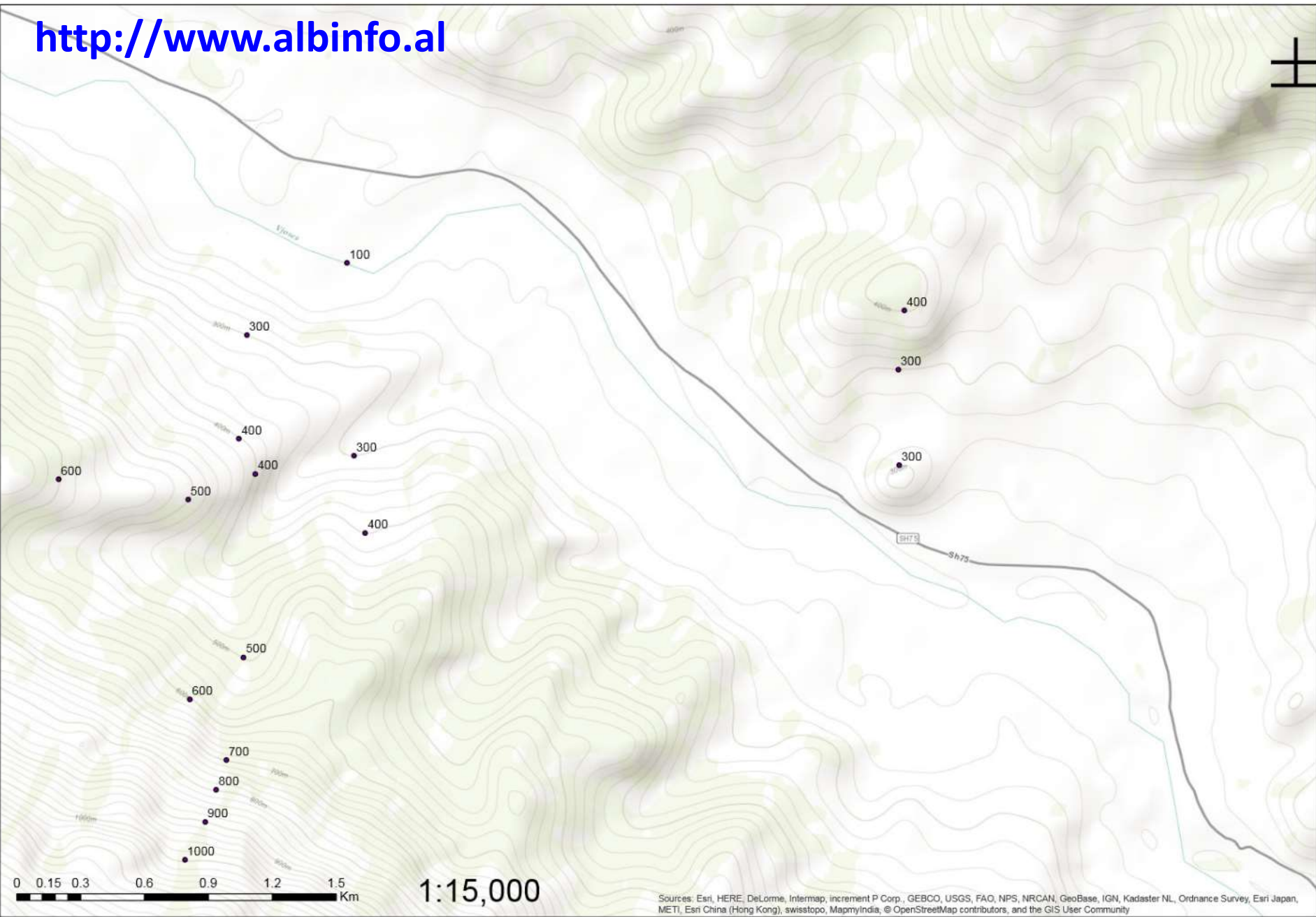
Fig. 36(2)



Fig. 37(2)



<http://www.albinfo.al>



Sources: Esri, HERE, DeLorme, Intermap, increment P Corp., GEBCO, USGS, FAO, NPS, NRCAN, GeoBase, IGN, Kadaster NL, Ordnance Survey, Esri Japan, METI, Esri China (Hong Kong), swisstopo, MapmyIndia, © OpenStreetMap contributors, and the GIS User Community

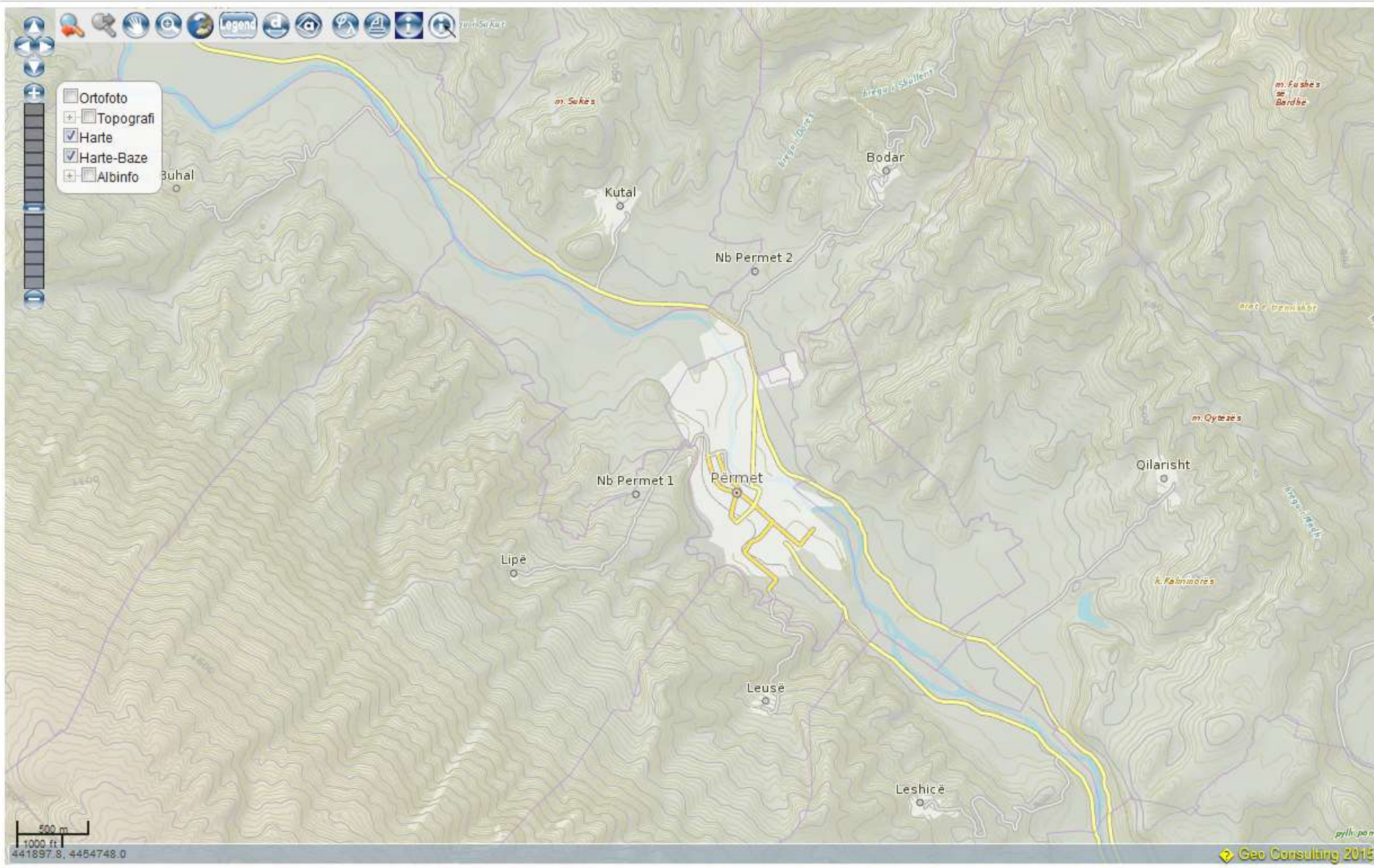
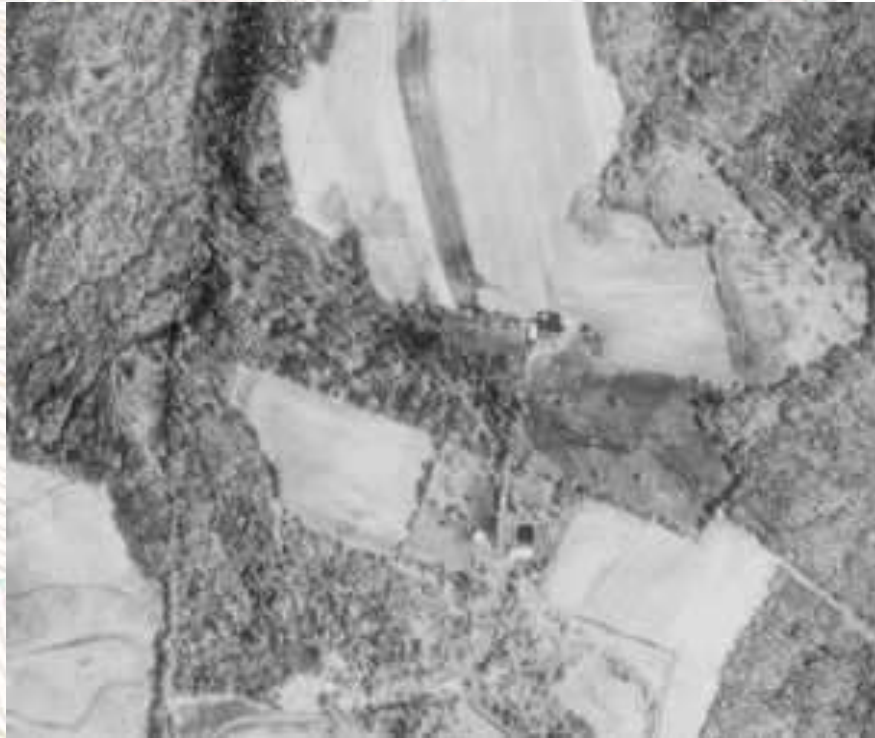
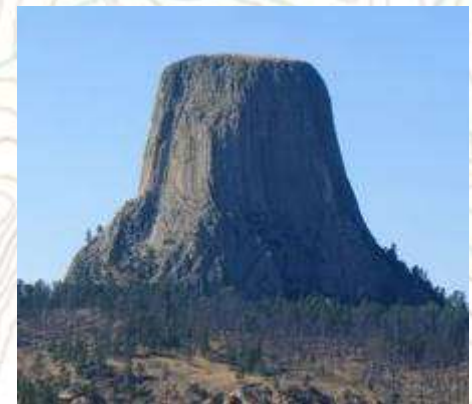
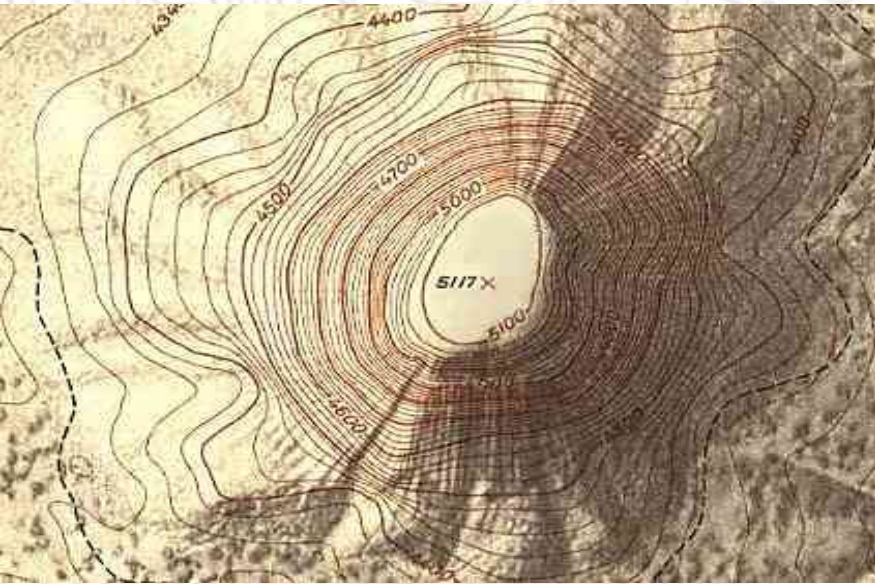


Foto apo Harte ?



Relievi



Cili eshte ?



1



A

1 B



2



B

2 E



3



C

3 D



4



D

4 C



5



E

5 F

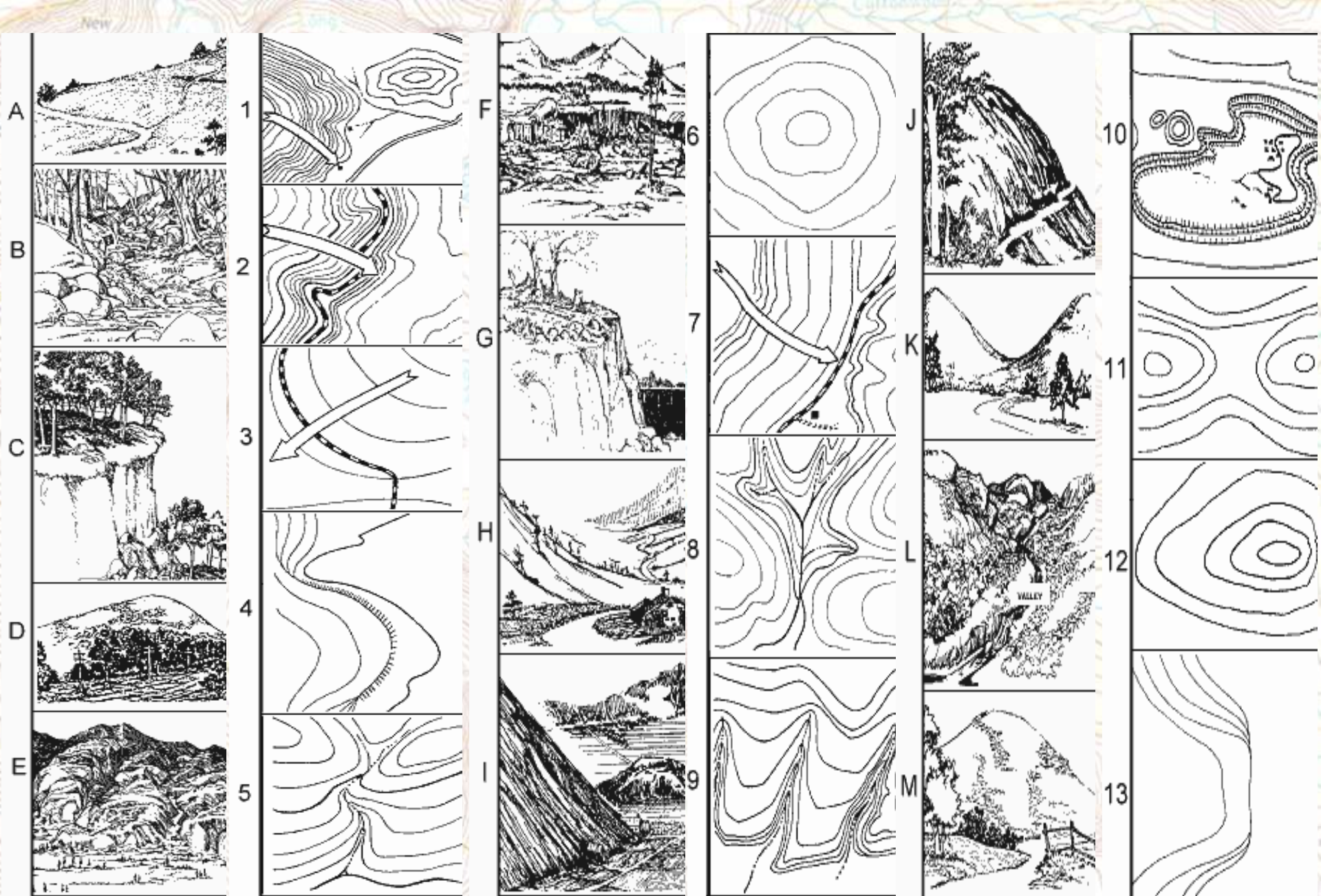


6

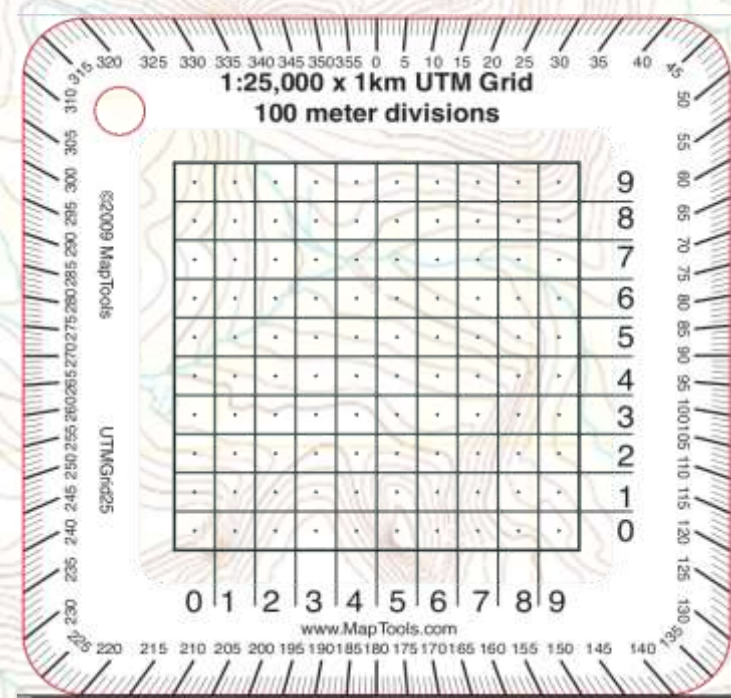
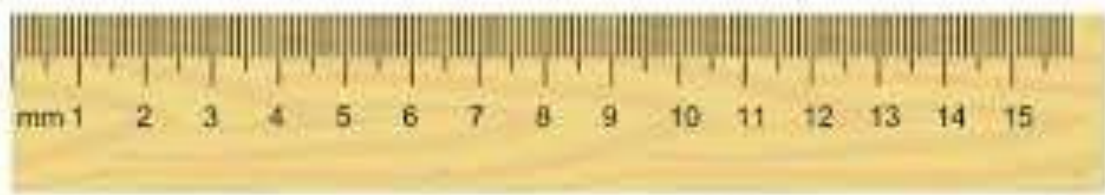


F

6 A



Mjetet e leximit



New Army Pass

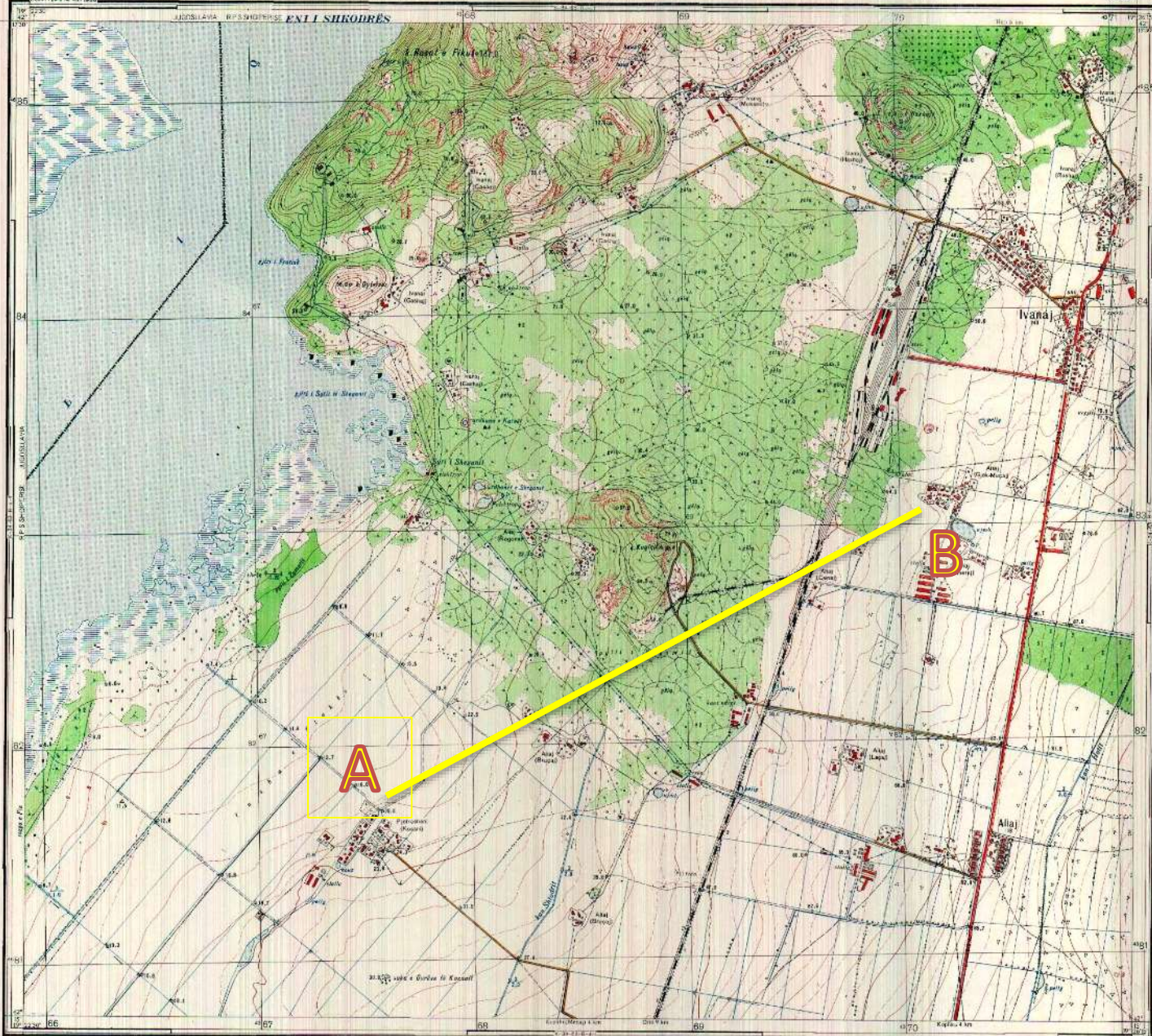
Republika Popullore Socialiste e Shqipërisë dhe Jugosllavisë

SHTABI PERGJITHSHEM
K-34-63-B-b-3 (IFRANJA)

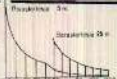
Sistemi i koordinatave shtrëtorë

Skalë 1:20000 në vitin 1958

DEKRETE



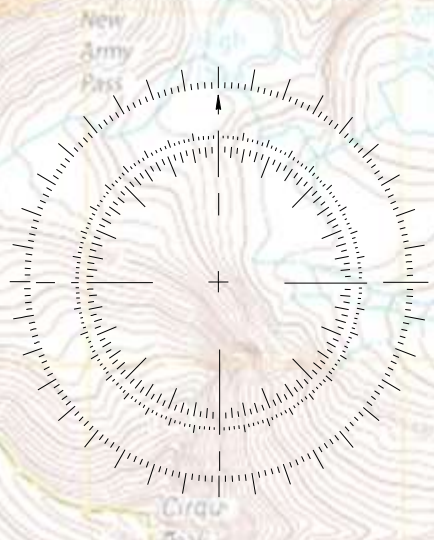
Shprehjet e vlerës 1:20000 brenda 0°21'00"-09'30" dhe 19°55'00"-00'00" të koordinatave shtrëtorë të sistemit të koordinatave shtrëtorë të Jugosllavisë dhe Shqipërisë. Nëse kërkohet të përdoren këto shprehjet, duhet të merret parasysh fakti se këto shprehjet janë të përafërta dhe mund të ndryshojnë në mënyrë të rëndësishme nëse kërkohet të përdoren këto shprehjet në mënyrë të përgjithshme.



Shprehjet e vlerës 1:20000 brenda 0°21'00"-09'30" dhe 19°55'00"-00'00" të koordinatave shtrëtorë të sistemit të koordinatave shtrëtorë të Jugosllavisë dhe Shqipërisë. Nëse kërkohet të përdoren këto shprehjet, duhet të merret parasysh fakti se këto shprehjet janë të përafërta dhe mund të ndryshojnë në mënyrë të rëndësishme nëse kërkohet të përdoren këto shprehjet në mënyrë të përgjithshme.

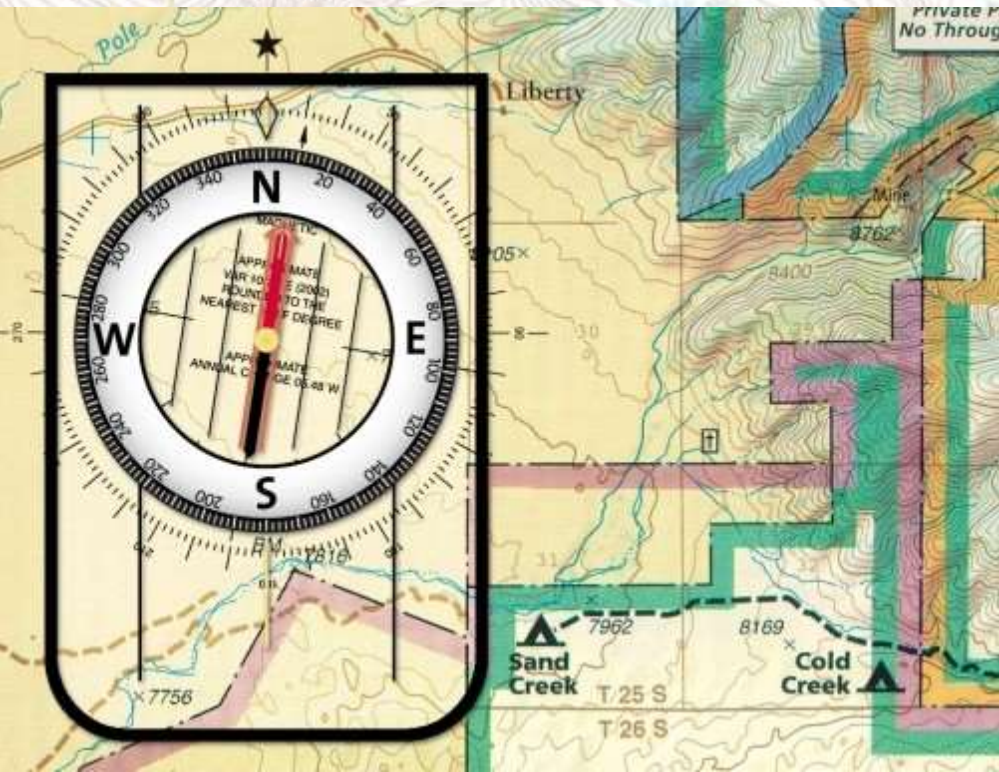
E. Muho

Perdorimi I busulles



Veriu I hartes dhe Veriu I vertet manjetik

Compass Rose with no declination deviation and one with an 11° East declination on a map. True north in both instances is at the top of the page.



Orientimi sipas veriut dhe leximi I gradeve

Set the compass's declination for your area. Note that the magnetic north and declination are aligned, (10.5° E in this example), while true north is at the top of the page and map.

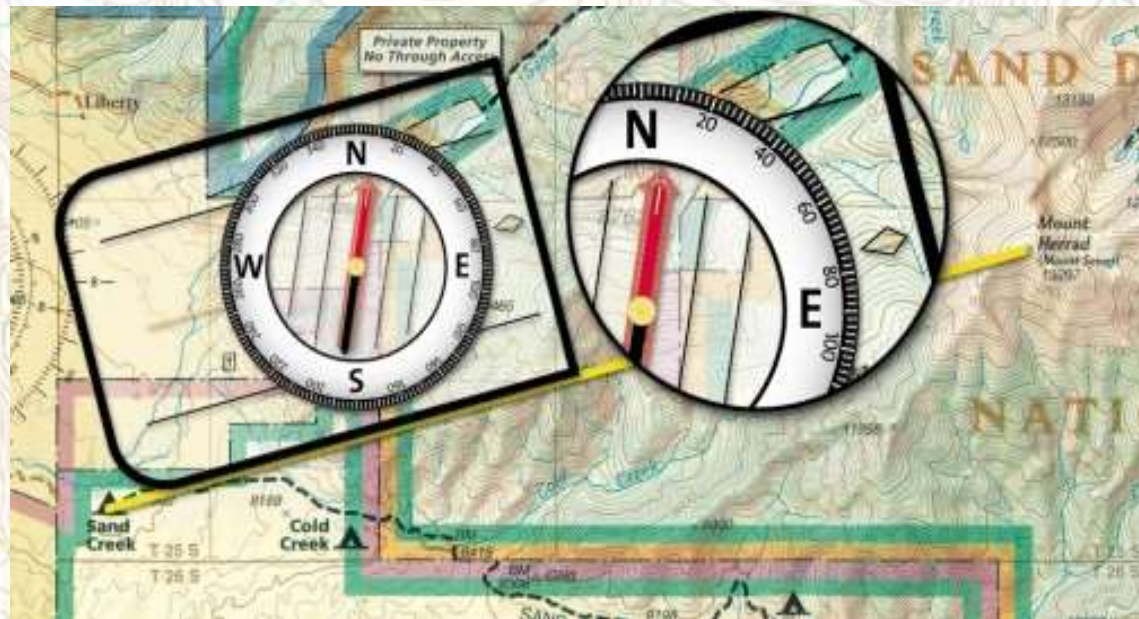
Perdorimi I busulles

Bashkimi I pikave per drejtimin dhe distancen

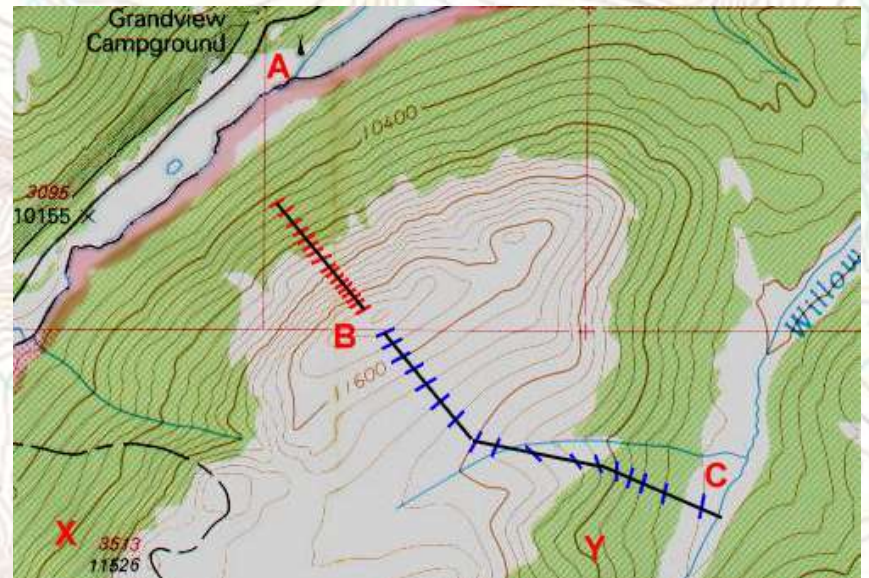
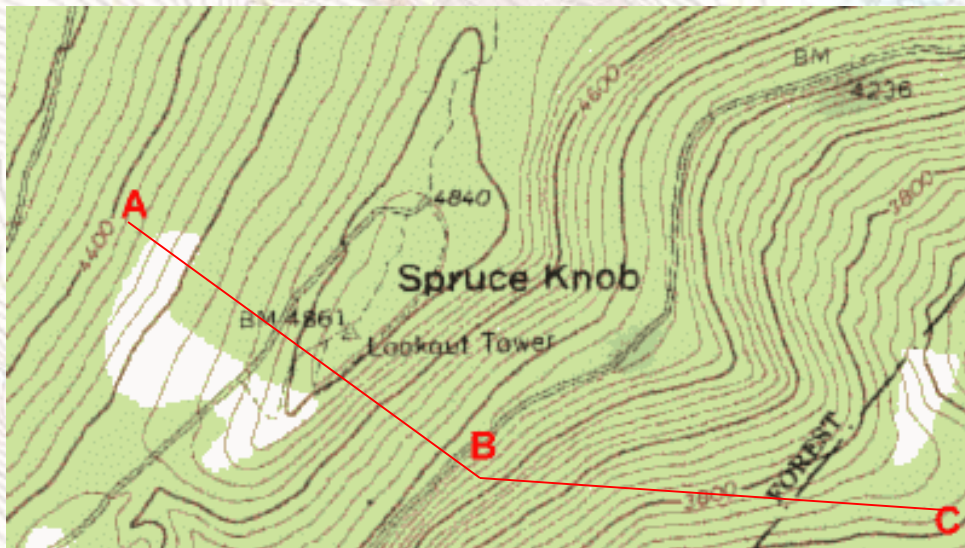
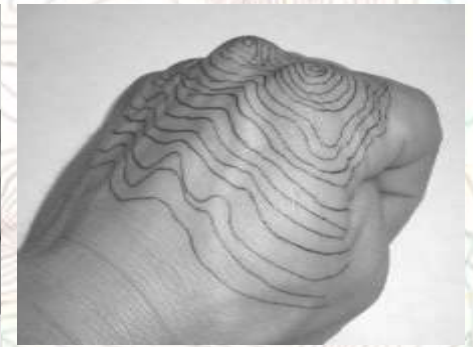
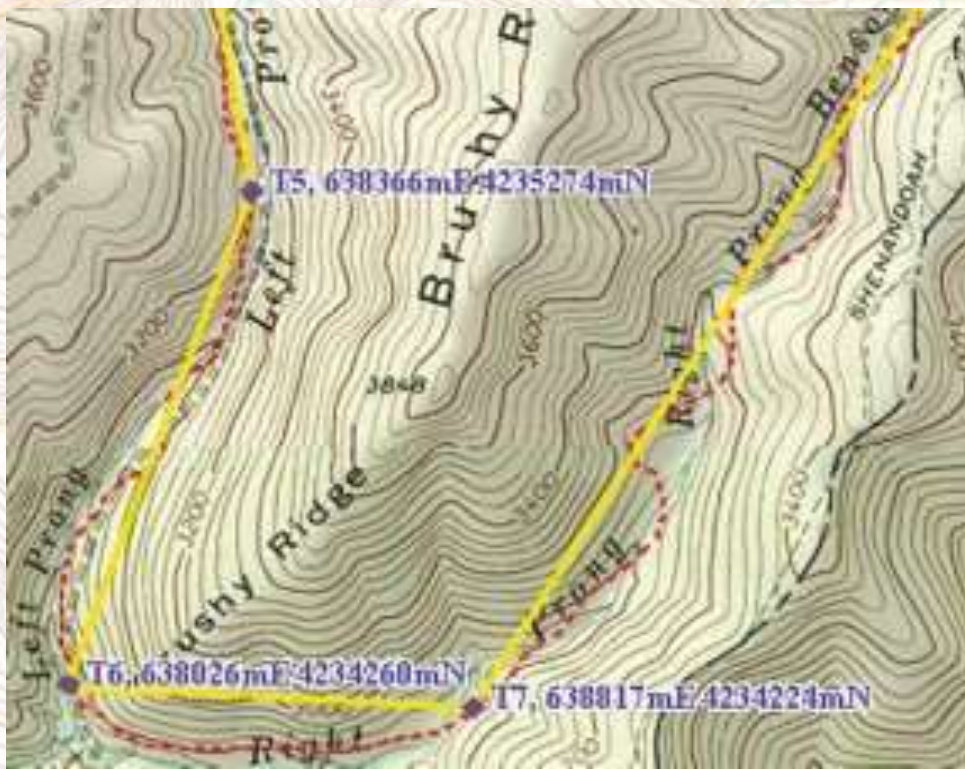
Next, from your location (Sand Creek Campground in this example) mark a line on the map to your point of interest (Mount Herrad in this case) and lay the compass along this line in the travel direction. (The straight edge of the compass, especially one with a folding cover, may span the map distance without needing to draw a line). Without a map aim the compass as precisely as possible by sight. Note the difference now between magnetic north red needle and the orienting arrow.

Veriu I hartes dhe Veriu I vertet manjetik tregojn drejtimin ne grade, (ne kte raste 75* veri-lindje)

Now turn the azimuth ring so the orienting arrow and the compass needle are aligned. The value that the index pointer shows is your bearing to that location (75° East Northeast in this example).



Percaktimi i nje udhe / shtegu



“ Nje harte eshte me e madhja nder te gjitha poemat epike. Ngjyrat dhe linjat tregojn realizimin e endrave te medha.”

Gilbert Grosvenor, Editor, National Geographic, 1903-1954

“ A map is the greatest of all epic poems. Its lines and colors show the realization of great dreams.”

Gilbert Grosvenor, Editor, National Geographic, 1903-1954



Rruge te mbare mes shtigjesh te reja.

A topographic map showing contour lines, water bodies, and geographical features. The map is overlaid with a yellow grid. The text 'FALEMINDERIT.' is centered in a bold, red, italicized font.

FALEMINDERIT.